



[Go to Product page](#)

Datasheet for ABIN5710135  
**PPM1B Protein (AA 2-193) (His-SUMO Tag)**

1 Image

Overview

Quantity:	100 µg
Target:	PPM1B
Protein Characteristics:	AA 2-193
Origin:	Human
Source:	Escherichia coli (E. coli)
Protein Type:	Recombinant
Purification tag / Conjugate:	This PPM1B protein is labelled with His-SUMO Tag.
Application:	SDS-PAGE (SDS)

Product Details

Sequence:	MSIVLVCFSN APKVSDEAVK KDELDKHLE SRVEEIMEKS GEEGMPDLAH VMRILSAENI PNLPPGGGLA GKRNVIEAVY SRLNPHRESG GASDEAEESG SQGKLVEALR QMRINHRGNY RQLLEMLTS YRLAKVEGEE SPAEPAATAT SSNSDAGNPV TMQESHTESE SGLAELDSSN EDAGTKMSGE KI
Purification:	SDS-PAGE
Purity:	> 90 %

Target Details

Target:	PPM1B
Alternative Name:	PPM1B ( <a href="#">PPM1B Products</a> )
Background:	Enzyme with a broad specificity. Dephosphorylates CDK2 and CDK6 in vitro. Dephosphorylates

## Target Details

PRKAA1 and PRKAA2. Inhibits TBK1-mediated antiviral signaling by dephosphorylating it at 'Ser-172'. Plays an important role in the termination of TNF-alpha-mediated NF-kappa-B activation through dephosphorylating and inactivating IKBKB/IKKB.

Molecular Weight: 36.74 kDa

UniProt: [O75688](#)

## Application Details

Application Notes: Optimal working dilution should be determined by the investigator.

Restrictions: For Research Use only

## Handling

Format: Liquid

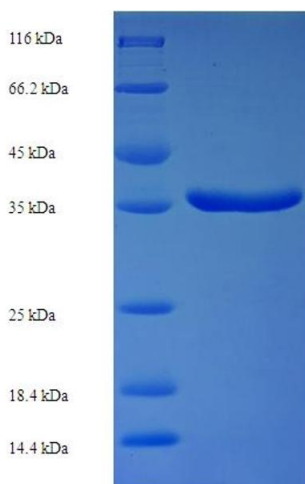
Concentration: 0.1-2 mg/mL

Buffer: 20 mM Tris-HCl based buffer, pH 8.0

Storage: -80 °C, 4 °C, -20 °C

Storage Comment: Store at -20°C, for extended storage, conserve at -20°C or -80°C. Repeated freezing and thawing is not recommended. Store working aliquots at 4°C for up to one week.

## Images



### SDS-PAGE

Image 1.