



Datasheet for ABIN5710137

PP2BC Protein (AA 2-512, partial) (His tag)



[Go to Product page](#)

1 Image

Overview

Quantity:	100 µg
Target:	PP2BC
Protein Characteristics:	AA 2-512, partial
Origin:	Human
Source:	Escherichia coli (E. coli)
Protein Type:	Recombinant
Purification tag / Conjugate:	This PP2BC protein is labelled with His tag.
Application:	SDS-PAGE (SDS)

Product Details

Sequence:	<p>SGRRFHLSTT DRVIKAVPPF PTQRLTFKEV FENGKPKVDV LKNHLVKEGR LEEEVALKII NDGAAILRQE KTMIEVDAPI TVCGDIHQF FDLMKLFEVG GSPSNTRYLF LGDYVDRGYF SIECVLYLWS LKINHPKTLF LLRGNHECRH LTDYFTFKQE CRIKYSEQVY DACMETFDCL PLAALLNQF LCVHGGMSPE ITSLDDIRKL DRFTEPPAFG PVCDLLWSDP SEDYGNEKTL EHYTHNTVRG CSYFYSYPAV CEFLQNNLL SIIRAHEAQD AGYRMYRKSQ ATGFPSLITI FSAPNYLDVY NNKAAVLKYE NNVMNIRQFN CSPHPYWLPN FMDVFTWSLP FVGEKVTEML VNVLNICSDD ELISDDEAEG STTVRKEIIR NKIRAIGKMA RVFSILRQES ESVLTLKGLT PTGTLPLGVL SGGKQTIETA TVEAVEAREA IRGFSLQHKI RSFEEARGLD RINERMPPRK DSIHAGGPMK SVTSAHSHAA HRSDQGKKAH S</p>
Purification:	SDS-PAGE
Purity:	> 90 %

Target Details

Target:	PP2BC
Alternative Name:	PP2BC (PP2BC Products)
Background:	Calcium-dependent, calmodulin-stimulated protein phosphatase. This subunit may have a role in the calmodulin activation of calcineurin.
Molecular Weight:	62.1 kDa
UniProt:	P48454

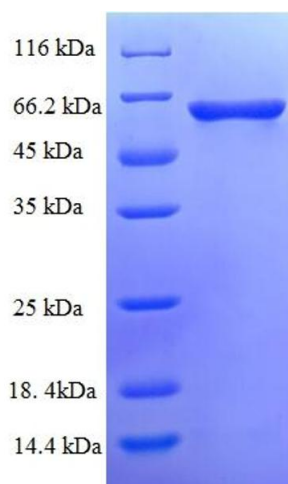
Application Details

Application Notes:	Optimal working dilution should be determined by the investigator.
Restrictions:	For Research Use only

Handling

Format:	Liquid
Concentration:	0.1-2 mg/mL
Buffer:	20 mM Tris-HCl based buffer, pH 8.0
Storage:	-80 °C, 4 °C, -20 °C
Storage Comment:	Store at -20°C, for extended storage, conserve at -20°C or -80°C. Repeated freezing and thawing is not recommended. Store working aliquots at 4°C for up to one week.

Images



SDS-PAGE

Image 1.