

Datasheet for ABIN571014

anti-IREB2 antibody (Internal Region)**2** Images[Go to Product page](#)

Overview

Quantity:	100 µg
Target:	IREB2
Binding Specificity:	Internal Region
Reactivity:	Human
Host:	Goat
Clonality:	Polyclonal
Conjugate:	This IREB2 antibody is un-conjugated
Application:	Western Blotting (WB), ELISA, Immunohistochemistry (IHC)

Product Details

Purpose:	IREB2 / IRP2
Immunogen:	C-SIHYEGSEYKLSHGS
Sequence:	SIHYEGSEYK LSHGS
Isotype:	IgG
Cross-Reactivity:	Human, Mouse, Rat
Purification:	Purified from goat serum by ammonium sulphate precipitation followed by antigen affinity chromatography using the immunizing peptide.
Grade:	Verified

Target Details

Target:	IREB2
Alternative Name:	IREB2 (IREB2 Products)
Background:	IREB2, iron-responsive element binding protein 2, ACO3, FLJ23381, IRP2, IRP2AD, iron regulatory protein 2
Gene ID:	3658, 64602, 64831
NCBI Accession:	NP_004127
Pathways:	Transition Metal Ion Homeostasis

Application Details

Application Notes:	<p>Immunohistochemistry: In paraffin embedded Human Kidney shows preferential staining in the cytoplasm of DCT. Recommended concentration, 3-6 µg/mL.</p> <p>Western Blot: Approx 110 kDa band observed in Human Liver lysates (calculated MW of 105 kDa according to NP_004127.1). Recommended concentration: 1-3 µg/mL. An additional band of unknown identity was also consistently observed at 60 kDa. This band was confirmed.</p> <p>Peptide ELISA: antibody detection limit dilution 1:32000.</p>
Restrictions:	For Research Use only

Handling

Format:	Liquid
Concentration:	0.5 mg/mL
Buffer:	Supplied at 0.5 mg/mL in Tris saline, 0.02 % sodium azide, pH 7.3 with 0.5 % bovine serum albumin.
Preservative:	Sodium azide
Precaution of Use:	This product contains Sodium azide: a POISONOUS AND HAZARDOUS SUBSTANCE which should be handled by trained staff only.
Handling Advice:	Minimize freezing and thawing.
Storage:	-20 °C
Storage Comment:	Aliquot and store at -20°C, with minimal freeze/thawing. A working aliquot may be refrigerated at 4°C for a few weeks and still remain viable.

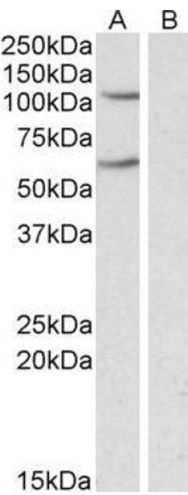
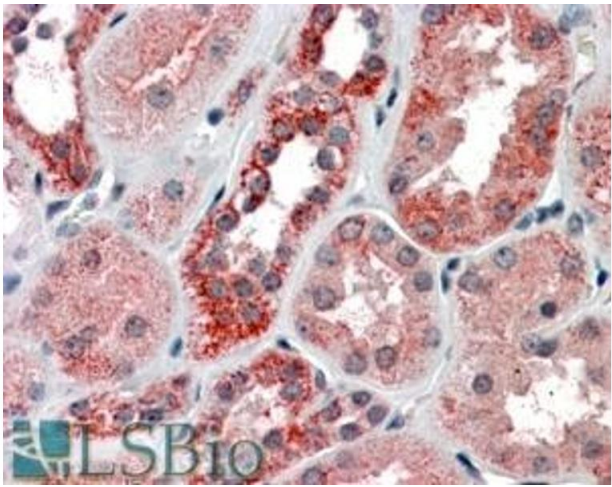


Image 1. ABIN571014 (0.3 µg/mL) staining of Human Liver lysate (35 µg protein in RIPA buffer). Primary incubation was 1 hour. Detected by chemiluminescence.



Immunohistochemistry

Image 2. ABIN571014 (3.8 µg/mL) staining of paraffin embedded Human Kidney. Steamed antigen retrieval with citrate buffer pH 6, AP-staining.