

Datasheet for ABIN571016  
**anti-JAM2 antibody (Internal Region)**[Go to Product page](#)

## 1 Image

## Overview

Quantity:	100 µg
Target:	JAM2
Binding Specificity:	Internal Region
Reactivity:	Human
Host:	Goat
Clonality:	Polyclonal
Conjugate:	This JAM2 antibody is un-conjugated
Application:	Western Blotting (WB), ELISA

## Product Details

Purpose:	JAM2 / JAMB / CD322
Immunogen:	Peptide with sequence C-QRKGYSKETSFQ, from the internal region of the protein sequence according to NP_067042.1.
Sequence:	QRKGYSKET SFQ
Isotype:	IgG
Cross-Reactivity:	Cow, Dog, Human, Mouse, Rat
Purification:	Purified from goat serum by ammonium sulphate precipitation followed by antigen affinity chromatography using the immunizing peptide.
Grade:	Verified

## Target Details

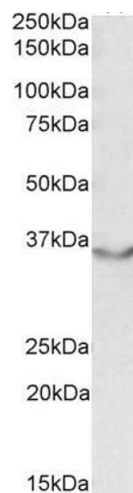
Target:	JAM2
Alternative Name:	JAM2 ( <a href="#">JAM2 Products</a> )
Background:	JAM2, junctional adhesion molecule 2, C21orf43, CD322, JAM-B, JAMB, PRO245, VE-JAM, VEJAM, JAM-IT/VE-JAM, OTTHUMP00000096100, junctional adhesion molecule B, vascular endothelial junction-associated molecule
Gene ID:	58494, 67374, 619374
NCBI Accession:	<a href="#">NP_067042</a>

## Application Details

Application Notes:	Western Blot: Approx 35 kDa band observed in Human Heart lysates (calculated MW of 33.2 kDa according to NP_067042.1). Recommended concentration: 0.5-1 µg/mL. Peptide ELISA: antibody detection limit dilution 1:4000.
Restrictions:	For Research Use only

## Handling

Format:	Liquid
Concentration:	0.5 mg/mL
Buffer:	Supplied at 0.5 mg/mL in Tris saline, 0.02 % sodium azide, pH 7.3 with 0.5 % bovine serum albumin.
Preservative:	Sodium azide
Precaution of Use:	This product contains Sodium azide: a POISONOUS AND HAZARDOUS SUBSTANCE which should be handled by trained staff only.
Handling Advice:	Minimize freezing and thawing.
Storage:	-20 °C
Storage Comment:	Aliquot and store at -20°C, with minimal freeze/thawing. A working aliquot may be refrigerated at 4°C for a few weeks and still remain viable.



#### Western Blotting

**Image 1.** ABIN571016 (0.5µg/ml) staining of Human Heart lysate (35µg protein in RIPA buffer) with (B) and without (A) blocking with the immunising peptide. Primary incubation was 1 hour. Detected by chemiluminescence.