

Datasheet for ABIN571017
anti-ITGAL antibody (Internal Region)

3 Images

[Go to Product page](#)

Overview

Quantity:	100 µg
Target:	ITGAL
Binding Specificity:	Internal Region
Reactivity:	Human
Host:	Goat
Clonality:	Polyclonal
Conjugate:	This ITGAL antibody is un-conjugated
Application:	Western Blotting (WB), Immunohistochemistry (IHC), ELISA

Product Details

Purpose:	CD11A / integrin alpha L
Immunogen:	Peptide with sequence C-YQVRIQPSIHDHN, from the internal region of the protein sequence according to NP_002200.2, NP_001107852.1.
Sequence:	YQVRIQPSIH DHN
Isotype:	IgG
Specificity:	This antibody is expected to recognize both reported isoforms (NP_002200.2, NP_001107852.1).
Cross-Reactivity:	Human
Purification:	Purified from goat serum by ammonium sulphate precipitation followed by antigen affinity chromatography using the immunizing peptide.

Product Details

Grade: Verified

Target Details

Target: ITGAL

Alternative Name: ITGAL ([ITGAL Products](#))

Background: ITGAL, integrin, alpha L (antigen CD11A (p180), lymphocyte function-associated antigen 1, alpha polypeptide), CD11A, LFA-1, LFA1A, LFA-1 alpha, antigen CD11A (p180), lymphocyte function-associated antigen 1, alpha polypeptide, integrin alpha L, integrin g

Molecular Weight: 129kDa

Gene ID: 3683

NCBI Accession: [NP_002200](#), [NP_001107852](#)

Pathways: [Activated T Cell Proliferation](#), [Integrin Complex](#)

Application Details

Application Notes: Immunohistochemistry: In paraffin embedded Human Lymph Node shows membrane staining in the paracortex. Recommended concentration: 2-4 µg/mL. Paraffin embedded Human Spleen. Recommended concentration: 3.75 µg/mL.
Western Blot: Approx 200 kDa band observed in Human Spleen and Tonsil lysates (calculated MW of 129 kDa according to NP_002200.2). This molecular weight is routinely observed by other sources. Recommended concentration: 0.5-2 µg/mL.
Peptide ELISA: antibody detection limit dilution 1:16000.

Restrictions: For Research Use only

Handling

Format: Liquid

Concentration: 0.5 mg/mL

Buffer: Supplied at 0.5 mg/mL in Tris saline, 0.02 % sodium azide, pH 7.3 with 0.5 % bovine serum albumin.

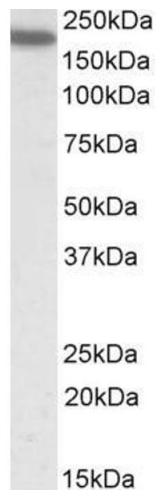
Preservative: Sodium azide

Precaution of Use: This product contains Sodium azide: a POISONOUS AND HAZARDOUS SUBSTANCE which should be handled by trained staff only.

Handling

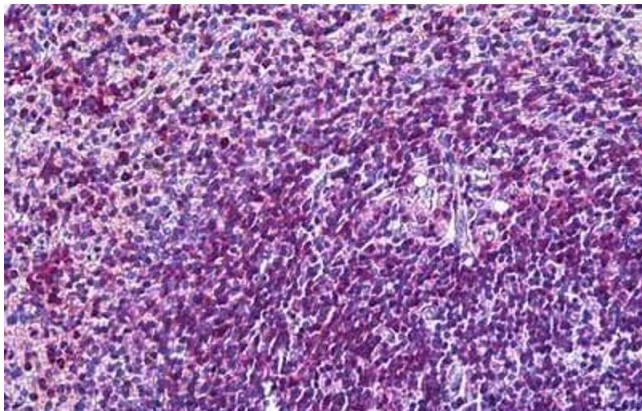
Handling Advice:	Minimize freezing and thawing.
Storage:	-20 °C
Storage Comment:	Aliquot and store at -20°C, with minimal freeze/thawing. A working aliquot may be refrigerated at 4°C for a few weeks and still remain viable.

Images



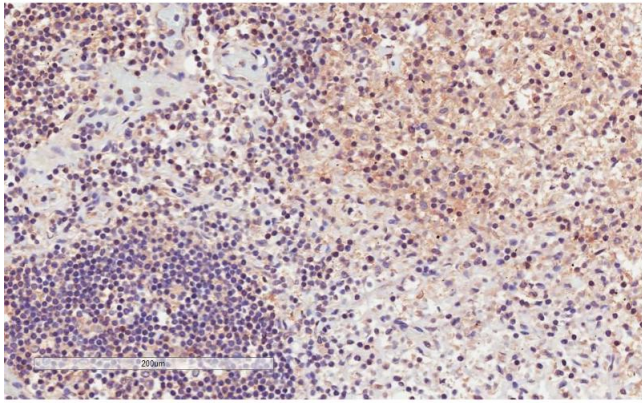
Western Blotting

Image 1. ABIN571017 (0.5µg/ml) staining of Human Spleen lysate (35µg protein in RIPA buffer). Primary incubation was 1 hour. Detected by chemiluminescence.



Immunohistochemistry

Image 2. ABIN571017 (3.75µg/ml) staining of paraffin embedded Human Spleen. Steamed antigen retrieval with citrate buffer pH 6, AP-staining.



Immunohistochemistry

Image 3. ABIN571017 (2µg/ml) staining of paraffin embedded Human Lymph Node. Microwaved antigen retrieval with citrate buffer pH 6, HRP-staining.