

Datasheet for ABIN5710191
PRVA Protein (AA 2-110) (His-SUMO Tag)



[Go to Product page](#)

1 Image

Overview

Quantity:	100 µg
Target:	PRVA
Protein Characteristics:	AA 2-110
Origin:	Human
Source:	Escherichia coli (E. coli)
Protein Type:	Recombinant
Purification tag / Conjugate:	This PRVA protein is labelled with His-SUMO Tag.
Application:	SDS-PAGE (SDS)

Product Details

Sequence:	SMTDLLNAED IKKAVGAFSA TDSFDHKKFF QMVGLKKKSA DDVKKVFHML DKDKSGFIEE DELGFILKGF SPDARDLSAK ETKMLMAAGD KDGDGKIGVD EFSTLVAES
Purification:	SDS-PAGE
Purity:	> 90 %

Target Details

Target:	PRVA
Alternative Name:	PRVA (PRVA Products)
Background:	In muscle, parvalbumin is thought to be involved in relaxation after contraction. It binds two calcium ions.

Target Details

Molecular Weight: 27.9 kDa

UniProt: [P20472](#)

Application Details

Application Notes: Optimal working dilution should be determined by the investigator.

Restrictions: For Research Use only

Handling

Format: Liquid

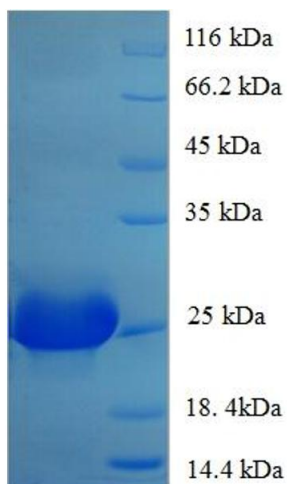
Concentration: 0.1-2 mg/mL

Buffer: 20 mM Tris-HCl based buffer, pH 8.0

Storage: -80 °C, 4 °C, -20 °C

Storage Comment: Store at -20°C, for extended storage, conserve at -20°C or -80°C. Repeated freezing and thawing is not recommended. Store working aliquots at 4°C for up to one week.

Images



SDS-PAGE

Image 1.