



[Go to Product page](#)

Datasheet for ABIN571020

anti-NFAT1 antibody (Internal Region)

2 Images

Overview

Quantity:	100 µg
Target:	NFAT1
Binding Specificity:	Internal Region
Reactivity:	Human
Host:	Goat
Clonality:	Polyclonal
Conjugate:	This NFAT1 antibody is un-conjugated
Application:	Western Blotting (WB), ELISA, Immunohistochemistry (IHC)

Product Details

Purpose:	NFATC2 / NFAT1
Immunogen:	Peptide with sequence C-QQFRTGLSSPDARYQ, from the internal region of the protein sequence according to NP_036472.2, NP_775114.1, NP_001129493.1.
Sequence:	QQFRTGLSSP DARYQ
Isotype:	IgG
Specificity:	This antibody is expected to recognize all three reported isoforms (NP_036472.2, NP_775114.1, NP_001129493.1).
Cross-Reactivity:	Cow, Dog, Human, Mouse, Rat
Purification:	Purified from goat serum by ammonium sulphate precipitation followed by antigen affinity chromatography using the immunizing peptide.

Product Details

Grade: Verified

Target Details

Target: NFAT1

Alternative Name: NFATC2 ([NFAT1 Products](#))

Background: NFATC2, nuclear factor of activated T-cells, cytoplasmic, calcineurin-dependent 2, KIAA0611, NFAT1, NFATP, NFAT pre-existing subunit, NFAT transcription complex, preexisting component, OTTHUMP00000031291, T cell transcription factor NFAT1, nuclear factor

Gene ID: 4773, 140488, 312320

NCBI Accession: [NP_036472](#), [NP_775114](#), [NP_001129493](#)

Pathways: [RTK Signaling](#), [WNT Signaling](#), [Fc-epsilon Receptor Signaling Pathway](#), [VEGF Signaling](#), [BCR Signaling](#)

Application Details

Application Notes: Immunohistochemistry: In paraffin embedded Human Spleen shows nuclear membrane and weaker cytoplasm staining in select splenocytes. Recommended concentration, 3-6 µg/mL.
Western Blot: Approx 110 kDa band observed in Human lysates of cell line MOLT4 (calculated MW of 100 kDa according to NP_775114.1). Recommended concentration: 0.3-1 µg/mL.
Peptide ELISA: antibody detection limit dilution 1:64000.

Restrictions: For Research Use only

Handling

Format: Liquid

Concentration: 0.5 mg/mL

Buffer: Supplied at 0.5 mg/mL in Tris saline, 0.02 % sodium azide, pH 7.3 with 0.5 % bovine serum albumin.

Preservative: Sodium azide

Precaution of Use: This product contains Sodium azide: a POISONOUS AND HAZARDOUS SUBSTANCE which should be handled by trained staff only.

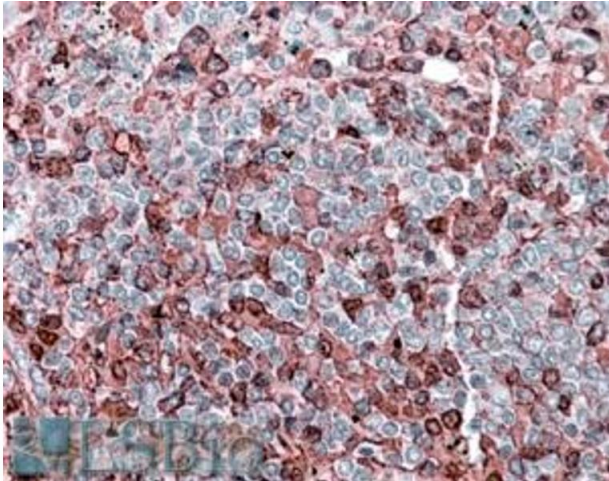
Handling Advice: Minimize freezing and thawing.

Handling

Storage: -20 °C

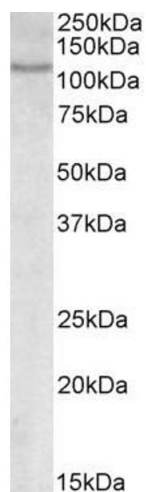
Storage Comment: Aliquot and store at -20°C, with minimal freeze/thawing. A working aliquot may be refrigerated at 4°C for a few weeks and still remain viable.

Images



Immunohistochemistry

Image 1. ABIN571020 (3.8µg/ml) staining of paraffin embedded Human Spleen. Steamed antigen retrieval with citrate buffer pH 6, AP-staining.



Western Blotting

Image 2. ABIN571020 (0.3µg/ml) staining of MOLT4 lysate (35µg protein in RIPA buffer). Primary incubation was 1 hour. Detected by chemiluminescence.