

Datasheet for ABIN571023
anti-CLIP1 antibody (C-Term)

2 Images

[Go to Product page](#)

Overview

Quantity:	100 µg
Target:	CLIP1
Binding Specificity:	C-Term
Reactivity:	Human
Host:	Goat
Clonality:	Polyclonal
Conjugate:	This CLIP1 antibody is un-conjugated
Application:	Western Blotting (WB), ELISA, Immunohistochemistry (IHC)

Product Details

Purpose:	Restin / CLIP1
Immunogen:	Peptide with sequence C-PHSTHHGSRGEERP, from the C Terminus of the protein sequence according to NP_002947.1, NP_937883.1.
Sequence:	PHSTHHGSRG EERP
Isotype:	IgG
Specificity:	This antibody is expected to recognize both reported isoforms (NP_002947.1, NP_937883.1).
Cross-Reactivity:	Dog, Human, Mouse, Pig, Rat
Purification:	Purified from goat serum by ammonium sulphate precipitation followed by antigen affinity chromatography using the immunizing peptide.
Grade:	Verified

Target Details

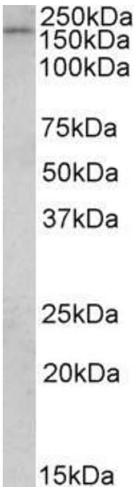
Target:	CLIP1
Alternative Name:	CLIP1 (CLIP1 Products)
Background:	CLIP1, CAP-GLY domain containing linker protein 1, CLIP, CLIP-170, CLIP170, CYLN1, MGC131604, RSN, Reed-Steinberg cell-expressed intermediate filament-associated protein, cytoplasmic linker 1, restin, restin (Reed-Steinberg cell-expressed intermediate fil
Gene ID:	6249, 56430, 65201
NCBI Accession:	NP_002947 , NP_937883
Pathways:	Microtubule Dynamics

Application Details

Application Notes:	Immunohistochemistry: Paraffin embedded Human Thyroid and Prostate. Recommended concentration: 2.5 µg/mL. Western Blot: Approx 160 kDa band observed in Human Breast Cancer lysates (calculated MW of 161 kDa according to NP_002947.1. Recommended concentration: 1-3 µg/mL. Peptide ELISA: antibody detection limit dilution 1:8000.
Restrictions:	For Research Use only

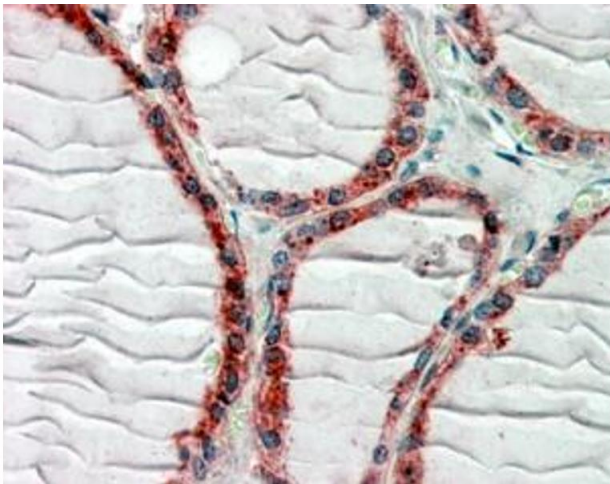
Handling

Format:	Liquid
Concentration:	0.5 mg/mL
Buffer:	Supplied at 0.5 mg/mL in Tris saline, 0.02 % sodium azide, pH 7.3 with 0.5 % bovine serum albumin.
Preservative:	Sodium azide
Precaution of Use:	This product contains Sodium azide: a POISONOUS AND HAZARDOUS SUBSTANCE which should be handled by trained staff only.
Handling Advice:	Minimize freezing and thawing.
Storage:	-20 °C
Storage Comment:	Aliquot and store at -20°C, with minimal freeze/thawing. A working aliquot may be refrigerated at 4°C for a few weeks and still remain viable.



Western Blotting

Image 1. ABIN571023 (1µg/ml) staining of Human Breast Cancer lysate (35µg protein in RIPA buffer). Primary incubation was 1 hour. Detected by chemiluminescence.



Immunohistochemistry

Image 2. ABIN571023 (2.5µg/ml) staining of paraffin embedded Human Thyroid Gland. Steamed antigen retrieval with citrate buffer pH 6, AP-staining.