

Datasheet for ABIN5710242

REG3g Protein (AA 27-174) (His tag)[Go to Product page](#)**1** Image

Overview

Quantity:	100 µg
Target:	REG3g
Protein Characteristics:	AA 27-174
Origin:	Rat
Source:	Escherichia coli (E. coli)
Protein Type:	Recombinant
Purification tag / Conjugate:	This REG3g protein is labelled with His tag.
Application:	SDS-PAGE (SDS)

Product Details

Sequence:	EDAKEDVPTS RISC PKGSRA YGSYCYALFS VSKSWFDADL ACQKRPSGHL VSVLSGSEAS FVSSLIKSSG NSGQNVWIGL HDPTLGQEPN RGGWEWSNAD VMNYFNWETN PSSVSGSHCG TLTRASGFLR WRENNCISEL PYVCKFKA
Purification:	SDS-PAGE
Purity:	> 90 %

Target Details

Target:	REG3g
Alternative Name:	REG3G (REG3g Products)
Background:	Bactericidal C-type lectin which acts exclusively against Gram-positive bacteria and mediates bacterial killing by binding to surface-exposed carbohydrate moieties of peptidoglycan.

Target Details

Restricts bacterial colonization of the intestinal epithelial surface and consequently limits activation of adaptive immune responses by the microbiota. The uncleaved form has bacteriostatic activity, whereas the cleaved form has bactericidal activity against *L.monocytogenes* and methicillin-resistant *S.aureus*. Regulates keratinocyte proliferation and differentiation after skin injury .

Molecular Weight: 20.34 kDa

UniProt: [P42854](#)

Pathways: [Activation of Innate immune Response](#)

Application Details

Application Notes: Optimal working dilution should be determined by the investigator.

Restrictions: For Research Use only

Handling

Format: Liquid

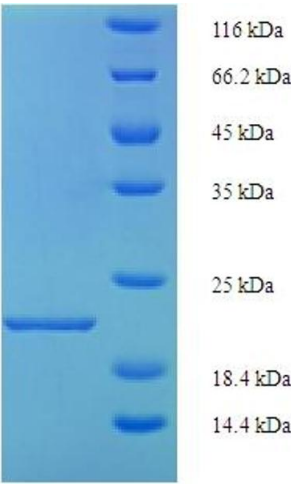
Concentration: 0.1-2 mg/mL

Buffer: 20 mM Tris-HCl based buffer, pH 8.0

Storage: -80 °C,4 °C,-20 °C

Storage Comment: Store at -20°C, for extended storage, conserve at -20°C or -80°C. Repeated freezing and thawing is not recommended. Store working aliquots at 4°C for up to one week.

Images



SDS-PAGE

Image 1.