



[Go to Product page](#)

Datasheet for ABIN5710278

## RPL35A Protein (AA 1-110, full length) (His-SUMO Tag)

### 1 Image

#### Overview

Quantity:	100 µg
Target:	RPL35A
Protein Characteristics:	AA 1-110, full length
Origin:	Human
Source:	Escherichia coli (E. coli)
Protein Type:	Recombinant
Purification tag / Conjugate:	This RPL35A protein is labelled with His-SUMO Tag.
Application:	SDS-PAGE (SDS)

#### Product Details

Sequence:	MSGRLWSKAI FAGYKRGLRN QREHTALLKI EGVYARDETE FYLGKRCAYV YKAKNNTVTP GGKPNKTRVI WGKVTRAHGN SGMVRAKFRS NLPKAIGAHR IRVMLYPSRI
Purification:	SDS-PAGE
Purity:	> 90 %

#### Target Details

Target:	RPL35A
Alternative Name:	RL35A ( <a href="#">RPL35A Products</a> )
Background:	Required for the proliferation and viability of hatopoietic cells. Plays a role in 60S ribosomal subunit formation. The protein was found to bind to both initiator and elongator tRNAs and consequently was assigned to the P site or P and A site.

## Target Details

Molecular Weight: 28.5 kDa

UniProt: [P18077](#)

## Application Details

Application Notes: Optimal working dilution should be determined by the investigator.

Restrictions: For Research Use only

## Handling

Format: Liquid

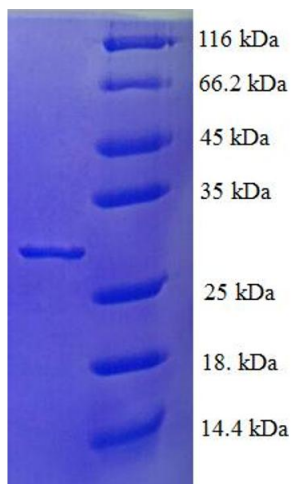
Concentration: 0.1-2 mg/mL

Buffer: 20 mM Tris-HCl based buffer, pH 8.0

Storage: -80 °C, 4 °C, -20 °C

Storage Comment: Store at -20°C, for extended storage, conserve at -20°C or -80°C. Repeated freezing and thawing is not recommended. Store working aliquots at 4°C for up to one week.

## Images



### SDS-PAGE

**Image 1.**