

Datasheet for ABIN5710298

S100A6 Protein (AA 1-90, full length) (His-SUMO Tag)[Go to Product page](#)**1** Image

Overview

Quantity:	100 µg
Target:	S100A6
Protein Characteristics:	AA 1-90, full length
Origin:	Human
Source:	Escherichia coli (E. coli)
Protein Type:	Recombinant
Purification tag / Conjugate:	This S100A6 protein is labelled with His-SUMO Tag.
Application:	SDS-PAGE (SDS)

Product Details

Sequence:	MACPLDQAIG LLVAIFHKYS GREGDKHTLS KKELKELIQK ELTIGSKLQD AEIARLMEDL DRNKDQEVNF QEYVTFGLGAL ALIYNEALKG
Purification:	SDS-PAGE
Purity:	> 90 %

Target Details

Target:	S100A6
Alternative Name:	S10A6 (S100A6 Products)
Background:	May function as calcium sensor and modulator, contributing to cellular calcium signaling. May function by interacting with other proteins, such as TPR-containing proteins, and indirectly play a role in many physiological processes such as the reorganization of the actin cytoskeleton and

Target Details

	in cell motility. Binds 2 calcium ions. Calcium binding is cooperative.
Molecular Weight:	26.2 kDa
UniProt:	P06703
Pathways:	S100 Proteins

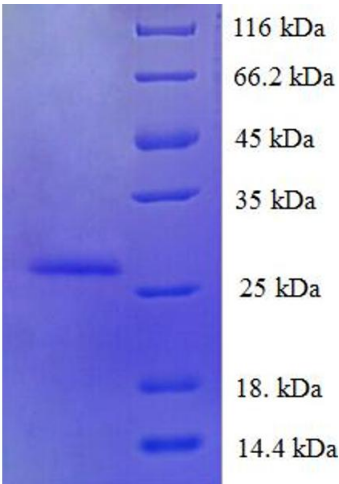
Application Details

Application Notes:	Optimal working dilution should be determined by the investigator.
Restrictions:	For Research Use only

Handling

Format:	Liquid
Concentration:	0.1-2 mg/mL
Buffer:	20 mM Tris-HCl based buffer, pH 8.0
Storage:	-80 °C, 4 °C, -20 °C
Storage Comment:	Store at -20°C, for extended storage, conserve at -20°C or -80°C. Repeated freezing and thawing is not recommended. Store working aliquots at 4°C for up to one week.

Images



SDS-PAGE

Image 1.