

Datasheet for ABIN5710318
SCP2 Protein (AA 1-143) (GST tag)



[Go to Product page](#)

1 Image

Overview

Quantity:	100 µg
Target:	SCP2
Protein Characteristics:	AA 1-143
Origin:	Human
Source:	Escherichia coli (E. coli)
Protein Type:	Recombinant
Purification tag / Conjugate:	This SCP2 protein is labelled with GST tag.
Application:	SDS-PAGE (SDS)

Product Details

Sequence:	MGFPEAASSF RTHQIEAVPT SSASDGFKAN LVFKEIEKKL EEEGEQFVKK IGGIFAFKVK DGPGGKEATW VVDVKNGKGS VLPNSDKKAD CTITMADSDF LALMTGKMNP QSAFFQGKLK ITGNMGLAMK LQNLQLQPGN AKL
Purification:	SDS-PAGE
Purity:	> 90 %

Target Details

Target:	SCP2
Alternative Name:	NLTP (SCP2 Products)
Background:	Mediates in vitro the transfer of all common phospholipids, cholesterol and gangliosides between mbranes. May play a role in regulating steroidogenesis.

Target Details

Molecular Weight:	42.8 kDa
UniProt:	P22307
Pathways:	C21-Steroid Hormone Metabolic Process , Monocarboxylic Acid Catabolic Process

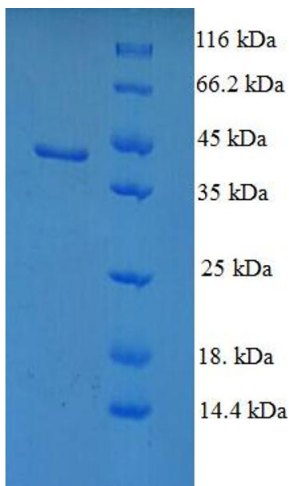
Application Details

Application Notes:	Optimal working dilution should be determined by the investigator.
Restrictions:	For Research Use only

Handling

Format:	Liquid
Concentration:	0.1-2 mg/mL
Buffer:	20 mM Tris-HCl based buffer, pH 8.0
Storage:	-80 °C, 4 °C, -20 °C
Storage Comment:	Store at -20°C, for extended storage, conserve at -20°C or -80°C. Repeated freezing and thawing is not recommended. Store working aliquots at 4°C for up to one week.

Images



SDS-PAGE

Image 1.