



[Go to Product page](#)

Datasheet for ABIN571032
anti-SRF antibody (Internal Region)

1 Image

Overview

Quantity:	100 µg
Target:	SRF
Binding Specificity:	Internal Region
Reactivity:	Human
Host:	Goat
Clonality:	Polyclonal
Application:	Western Blotting (WB), ELISA

Product Details

Purpose:	SRF
Immunogen:	Peptide with sequence C-QASPSRDSSTDLTQ, from the internal region of the protein sequence according to NP_003122.1.
Sequence:	QASPSRDSST DLTQ
Isotype:	IgG
Cross-Reactivity:	Cow, Dog, Human, Mouse
Purification:	Purified from goat serum by ammonium sulphate precipitation followed by antigen affinity chromatography using the immunizing peptide.
Grade:	Verified

Target Details

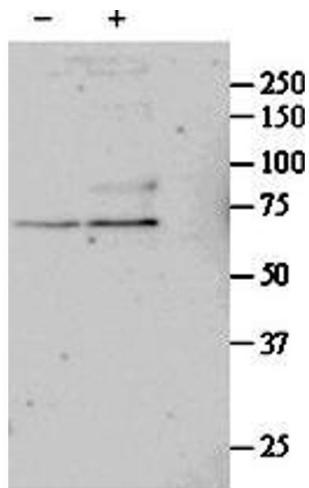
Target:	SRF
Alternative Name:	SRF (SRF Products)
Background:	SRF, serum response factor (c-fos serum response element-binding transcription factor), MCM1, OTTHUMP00000039820
Gene ID:	6722, 20807, 501099
NCBI Accession:	NP_003122

Application Details

Application Notes:	Western Blot: Approx 67 kDa band observed in primary cultured Human Lung fibroblasts lysates after 24 h treatment with 1 ng/mL TGF- β 1 (calculated MW of 51.6 kDa according to NP_003122.1). The observed molecular weight corresponds to earlier findings in lit Peptide ELISA: antibody detection limit dilution 1:32000.
Restrictions:	For Research Use only

Handling

Format:	Liquid
Concentration:	0.5 mg/mL
Buffer:	Supplied at 0.5 mg/mL in Tris saline, 0.02 % sodium azide, pH 7.3 with 0.5 % bovine serum albumin.
Preservative:	Sodium azide
Precaution of Use:	This product contains Sodium azide: a POISONOUS AND HAZARDOUS SUBSTANCE which should be handled by trained staff only.
Handling Advice:	Minimize freezing and thawing.
Storage:	-20 °C
Storage Comment:	Aliquot and store at -20°C, with minimal freeze/thawing. A working aliquot may be refrigerated at 4°C for a few weeks and still remain viable.



Western Blotting

Image 1. ABIN571032 (1 μ g/ml) staining of untreated (first lane) and TGF- β 1-treated (second lane) primary cultured Human Lung fibroblast lysate. Primary incubated overnight at 4°C. Detected by western blot using chemiluminescence.