



[Go to Product page](#)

Datasheet for ABIN5710328

SEC16A Protein (AA 1943-2154, partial) (His tag)

1 Image

Overview

Quantity:	100 µg
Target:	SEC16A
Protein Characteristics:	AA 1943-2154, partial
Origin:	Human
Source:	Escherichia coli (E. coli)
Protein Type:	Recombinant
Purification tag / Conjugate:	This SEC16A protein is labelled with His tag.
Application:	SDS-PAGE (SDS)

Product Details

Sequence:	AYLPDDKNKS IVWDEKKNQW VNLNEPEEEK KAPPPPTSM PKTVQAAPPA LPGPPGAPVN MYSRRAAGTR ARYVDVLNPS GTQRSEPALA PADFVAPLAP LPIPSNLFVP TPDAEEPQLP DGTGREGPAA ARGLANPEPA PEPKLSRCSS MSSLSREVSQ HFNQAPGDLP AAGGPPSGAM PFYNPAQLAQ ACATSGSSRL GRIGQRKHLV LN
Purification:	SDS-PAGE
Purity:	> 90 %

Target Details

Target:	SEC16A
Alternative Name:	SC16A (SEC16A Products)
Background:	Defines endoplasmic reticulum exit sites (ERES) and is required for secretory cargo traffic from

Target Details

the endoplasmic reticulum to the Golgi apparatus. SAR1A-GTP-dependent assembly of SEC16A on the ER membrane forms an organized scaffold defining an ERES. Required for normal transitional endoplasmic reticulum (tER) organization.

Molecular Weight: 26.4 kDa

UniProt: [O15027](#)

Application Details

Application Notes: Optimal working dilution should be determined by the investigator.

Restrictions: For Research Use only

Handling

Format: Liquid

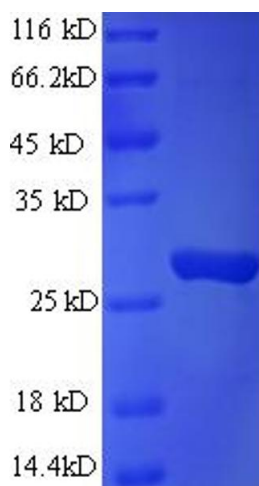
Concentration: 0.1-2 mg/mL

Buffer: 20 mM Tris-HCl based buffer, pH 8.0

Storage: -80 °C, 4 °C, -20 °C

Storage Comment: Store at -20°C, for extended storage, conserve at -20°C or -80°C. Repeated freezing and thawing is not recommended. Store working aliquots at 4°C for up to one week.

Images



SDS-PAGE

Image 1.