

Datasheet for ABIN571033
anti-CA1 antibody (Internal Region)[Go to Product page](#)

2 Images

Overview

Quantity:	100 µg
Target:	CA1
Binding Specificity:	Internal Region
Reactivity:	Human
Host:	Goat
Clonality:	Polyclonal
Conjugate:	This CA1 antibody is un-conjugated
Application:	Western Blotting (WB), ELISA, Immunohistochemistry (IHC)

Product Details

Purpose:	CA1
Immunogen:	C-QAIKTKGKRAP
Sequence:	QAIKTKGKRA P
Isotype:	IgG
Specificity:	Reported variants represent identical protein: NP_001729.1, NP_001122303.1, NP_001122302.1, NP_001122301.1.
Cross-Reactivity:	Human, Mouse, Rat
Purification:	Purified from goat serum by ammonium sulphate precipitation followed by antigen affinity chromatography using the immunizing peptide.
Grade:	Verified

Target Details

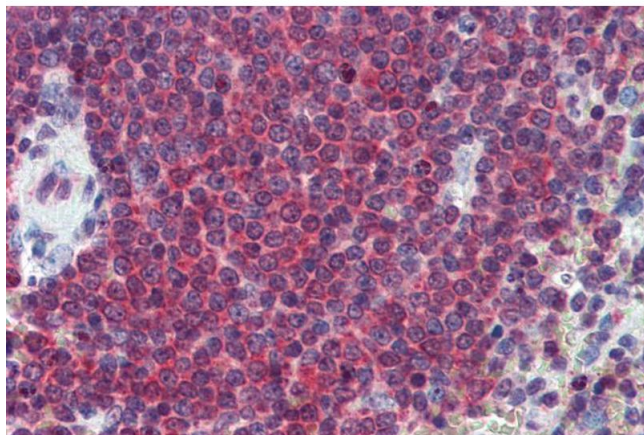
Target:	CA1
Alternative Name:	CA1 (CA1 Products)
Background:	CA1, carbonic anhydrase I, Car1, carbonic dehydratase
Gene ID:	759, 12346, 310218
NCBI Accession:	NP_001729

Application Details

Application Notes:	<p>Immunohistochemistry: Paraffin embedded Human Spleen. Recommended concentration: 2.5 µg/mL.</p> <p>Western Blot: Approx 29 kDa band observed in Human Liver lysates (calculated MW of 28.9 kDa according to NP_001729.1. Recommended concentration: 0.03-0.1 µg/mL. Primary incubation was 1 hour.</p> <p>Peptide ELISA: antibody detection limit dilution 1:64000.</p>
Restrictions:	For Research Use only

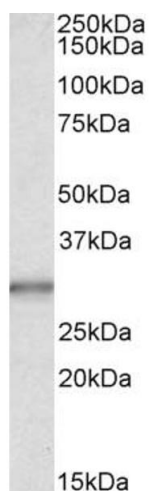
Handling

Format:	Liquid
Concentration:	0.5 mg/mL
Buffer:	Supplied at 0.5 mg/mL in Tris saline, 0.02 % sodium azide, pH 7.3 with 0.5 % bovine serum albumin.
Preservative:	Sodium azide
Precaution of Use:	This product contains Sodium azide: a POISONOUS AND HAZARDOUS SUBSTANCE which should be handled by trained staff only.
Handling Advice:	Minimize freezing and thawing.
Storage:	-20 °C
Storage Comment:	Aliquot and store at -20°C, with minimal freeze/thawing. A working aliquot may be refrigerated at 4°C for a few weeks and still remain viable.



Immunohistochemistry

Image 1. ABIN571033 (2.5µg/ml) staining of paraffin embedded Human Spleen. Steamed antigen retrieval with citrate buffer pH 6, AP-staining.



Western Blotting

Image 2. ABIN571033 (0.03µg/ml) staining of Human Liver lysate (35µg protein in RIPA buffer). Detected by chemiluminescence.