

Datasheet for ABIN5710380

SMCP Protein (AA 1-116, full length) (GST tag)[Go to Product page](#)**1** Image

Overview

Quantity:	100 µg
Target:	SMCP
Protein Characteristics:	full length, AA 1-116
Origin:	Human
Source:	Escherichia coli (E. coli)
Protein Type:	Recombinant
Purification tag / Conjugate:	This SMCP protein is labelled with GST tag.
Application:	SDS-PAGE (SDS)

Product Details

Sequence:	MCDQTKHSKC CPAKGNQCCP PQQNQCCQSK GNQCCPPKQN QCCQPKGSQC CPPKHNHCCQ PKPPCCIQR CCGLETKPEV SPLNMESEPN SPQTQDKGCQ TQQQPHSPQN ESRPSK
Purification:	SDS-PAGE
Purity:	> 90 %

Target Details

Target:	SMCP
Alternative Name:	MCSP (SMCP Products)
Background:	Involved in sperm motility. Its absence is associated with genetic background dependent male infertility. Infertility may be due to reduced sperm motility in the male reproductive tract and inability to penetrate the oocyte zona pellucida .

Target Details

Molecular Weight:	40.2 kDa
UniProt:	P49901

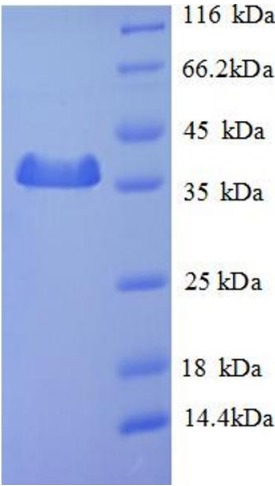
Application Details

Application Notes:	Optimal working dilution should be determined by the investigator.
Restrictions:	For Research Use only

Handling

Format:	Liquid
Concentration:	0.1-2 mg/mL
Buffer:	20 mM Tris-HCl based buffer, pH 8.0
Storage:	-80 °C, 4 °C, -20 °C
Storage Comment:	Store at -20°C, for extended storage, conserve at -20°C or -80°C. Repeated freezing and thawing is not recommended. Store working aliquots at 4°C for up to one week.

Images



SDS-PAGE

Image 1.