

Datasheet for ABIN571040  
**anti-HMGA1 antibody (AA 9-21)**

## 3 Images

[Go to Product page](#)

## Overview

Quantity:	100 µg
Target:	HMGA1
Binding Specificity:	AA 9-21
Reactivity:	Human
Host:	Goat
Clonality:	Polyclonal
Conjugate:	This HMGA1 antibody is un-conjugated
Application:	Western Blotting (WB), Immunohistochemistry (IHC), ELISA

## Product Details

Purpose:	HMGA1 (aa9-21)
Immunogen:	Peptide with sequence C-SQPLASKQEKGDT, from the internal region (near N Terminus) of the protein sequence according to NP_665906.1, NP_002122.1.
Sequence:	SQPLASKQEK DGT
Isotype:	IgG
Specificity:	This antibody is expected to recognize reported isoforms a (NP_665906.1, NP_665908.1, NP_665911.1) and b (NP_002122.1, NP_665910.1, NP_665912.1). This antibody is not expected to cross-react with HMGA2.
Cross-Reactivity:	Cow, Dog, Human, Mouse, Pig, Rat
Purification:	Purified from goat serum by ammonium sulphate precipitation followed by antigen affinity

## Product Details

chromatography using the immunizing peptide.

Grade: Verified

## Target Details

Target: HMGA1

Alternative Name: HMGA1 ([HMGA1 Products](#))

Background: HMGA1, high mobility group AT-hook 1, HMG-R, HMGA1A, HMGIY, MGC12816, MGC4242, MGC4854, OTTHUMP00000016222, OTTHUMP00000016223, OTTHUMP00000016224, OTTHUMP00000039618, high-mobility group (nonhistone chromosomal) protein isoforms I and Y, nonhistone chrom

Gene ID: 3159, 15361, 117062

NCBI Accession: [NP\\_665906](#), [NP\\_002122](#)

Pathways: [Nuclear Hormone Receptor Binding](#), [Autophagy](#)

## Application Details

Application Notes: Immunohistochemistry: Paraffin embedded Human Skin and Placenta. Recommended concentration: 3.75 µg/mL.  
Western Blot: Approx 24 kDa band observed in Human Pancreas (calculated MW of 11.7 kDa/10.7 kDa according to NP\_665906.1, NP\_002122.1). This molecular weight is routinely observed by other sources. This band was successfully blocked by incubation with the Peptide ELISA: antibody detection limit dilution 1:16000.

Restrictions: For Research Use only

## Handling

Format: Liquid

Concentration: 0.5 mg/mL

Buffer: Supplied at 0.5 mg/mL in Tris saline, 0.02 % sodium azide, pH 7.3 with 0.5 % bovine serum albumin.

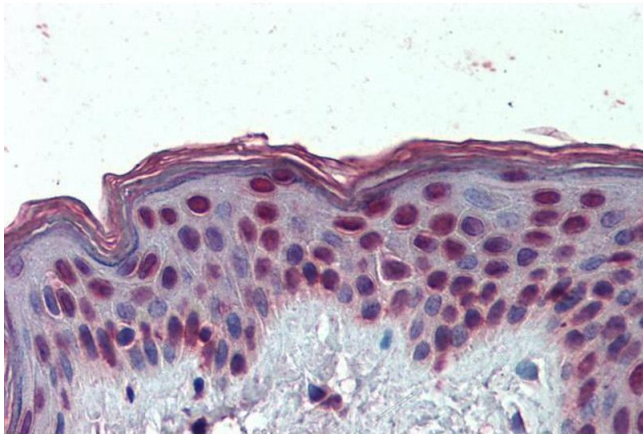
Preservative: Sodium azide

Precaution of Use: This product contains Sodium azide: a POISONOUS AND HAZARDOUS SUBSTANCE which should be handled by trained staff only.

## Handling

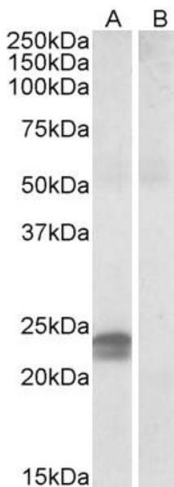
Handling Advice:	Minimize freezing and thawing.
Storage:	-20 °C
Storage Comment:	Aliquot and store at -20°C, with minimal freeze/thawing. A working aliquot may be refrigerated at 4°C for a few weeks and still remain viable.

## Images



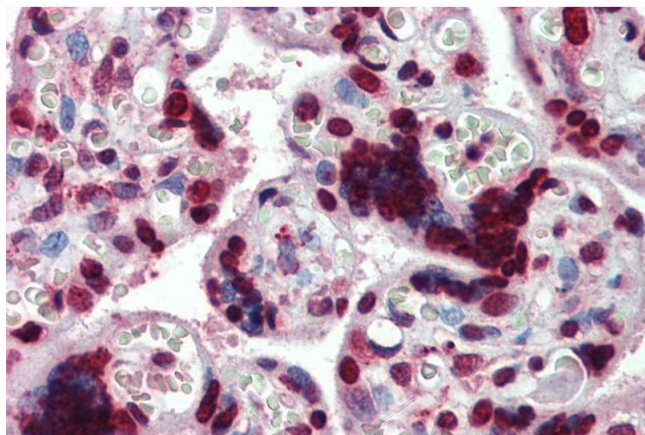
### Immunohistochemistry

**Image 1.** ABIN571040 (3.75µg/ml) staining of paraffin embedded Human Skin. Steamed antigen retrieval with citrate buffer pH 6, AP-staining.



### Western Blotting

**Image 2.** ABIN571040 (0.5µg/ml) staining of Human Pancreas lysate (35µg protein in RIPA buffer) with (B) and without (A) blocking with the immunising peptide. Detected by chemiluminescence.



#### Immunohistochemistry

**Image 3.** ABIN571040 (3.75µg/ml) staining of paraffin embedded Human Placenta. Steamed antigen retrieval with citrate buffer pH 6, AP-staining.