

Datasheet for ABIN571041  
**anti-CNN2 antibody (Internal Region)**[Go to Product page](#)

## 2 Images

## Overview

Quantity:	100 µg
Target:	CNN2
Binding Specificity:	Internal Region
Reactivity:	Human
Host:	Goat
Clonality:	Polyclonal
Conjugate:	This CNN2 antibody is un-conjugated
Application:	Western Blotting (WB), ELISA, Immunohistochemistry (IHC)

## Product Details

Purpose:	Calponin 2 / CNN2
Immunogen:	Peptide with sequence C-DPGEVPEYPPYYQEE, from the internal region (near C Terminus) of the protein sequence according to NP_004359.1, NP_958434.1.
Sequence:	DPGEVPEYPP YYQEE
Isotype:	IgG
Specificity:	This antibody is expected to recognize both reported isoforms (NP_004359.1, NP_958434.1), but it is not expected to cross-react with CCN3.
Cross-Reactivity:	Human
Purification:	Purified from goat serum by ammonium sulphate precipitation followed by antigen affinity chromatography using the immunizing peptide.

## Product Details

Grade: Verified

## Target Details

Target: CNN2

Alternative Name: CNN2 ([CNN2 Products](#))

Background: CNN2, calponin 2, calponin H2, smooth muscle, neutral calponin

Gene ID: 1265

NCBI Accession: [NP\\_004359](#), [NP\\_958434](#)

## Application Details

Application Notes: Immunohistochemistry: Paraffin embedded Human Placenta. Recommended concentration: 2.5 µg/mL.

Western Blot: Approx 35 kDa band observed in lysates of cell line HepG2 (calculated MW of 33.7 kDa according to NP\_004359.1). Recommended concentration: 0.03-0.1 µg/mL. Primary incubation was 1 hour.

Peptide ELISA: antibody detection limit dilution 1:32000.

Restrictions: For Research Use only

## Handling

Format: Liquid

Concentration: 0.5 mg/mL

Buffer: Supplied at 0.5 mg/mL in Tris saline, 0.02 % sodium azide, pH 7.3 with 0.5 % bovine serum albumin.

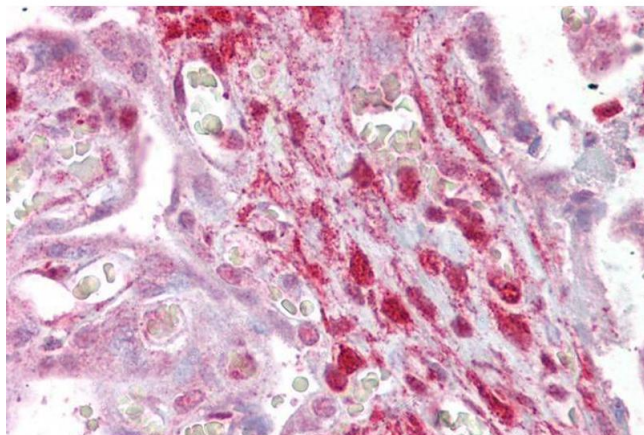
Preservative: Sodium azide

Precaution of Use: This product contains Sodium azide: a POISONOUS AND HAZARDOUS SUBSTANCE which should be handled by trained staff only.

Handling Advice: Minimize freezing and thawing.

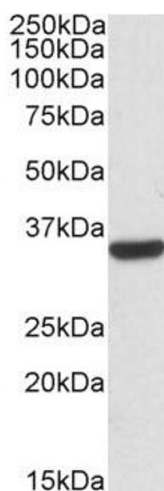
Storage: -20 °C

Storage Comment: Aliquot and store at -20°C, with minimal freeze/thawing. A working aliquot may be refrigerated at 4°C for a few weeks and still remain viable.



#### Immunohistochemistry

**Image 1.** ABIN571041 (2.5µg/ml) staining of paraffin embedded Human Placenta. Steamed antigen retrieval with citrate buffer pH 6, AP-staining.



#### Western Blotting

**Image 2.** ABIN571041 (0.03µg/ml) staining of HepG2 lysates (35µg protein in RIPA buffer). Detected by chemiluminescence.