

Datasheet for ABIN5710412  
**CD43 Protein (AA 20-253) (His-SUMO Tag)**



[Go to Product page](#)

1 Image

## Overview

Quantity:	100 µg
Target:	CD43 (SPN)
Protein Characteristics:	AA 20-253
Origin:	Human
Source:	Escherichia coli (E. coli)
Protein Type:	Recombinant
Purification tag / Conjugate:	This CD43 protein is labelled with His-SUMO Tag.
Application:	SDS-PAGE (SDS)

## Product Details

Sequence:	STTAVQTPTS GEPLVSTSEP LSSKMYTTSI TSDPKADSTG DQTSALPPST SINEGSPLWT SIGASTGSPL PEPTTYQEVS IKMSSVPQET PHATSHPAVP ITANSLGSHT VTGGTITTNS PETSSRTSGA PVTTAASSLE TSRGTSGPPL TMATVSLETS KGTSPPVMTM ATDSLETSTG TTGPPVTMTT GSLEPSSGAS GPQVSSVKLS TMMSPPTSTN ASTVPFRNPD ENSR
Purification:	SDS-PAGE
Purity:	> 90 %

## Target Details

Target:	CD43 (SPN)
Alternative Name:	LEUK ( <a href="#">SPN Products</a> )
Background:	One of the major glycoproteins of thymocytes and T lymphocytes. Plays a role in the

## Target Details

---

physicochemical properties of the T-cell surface and in lectin binding. Presents carbohydrate ligands to selectins. Has an extended rodlike structure that could protrude above the glycocalyx of the cell and allow multiple glycan chains to be accessible for binding. Is a counter-receptor for SN/Siglec-1. During T-cell activation is actively retracted from the T-cell-APC (antigen-presenting cell) contact site thus suggesting a negative regulatory role in adaptive immune response.

---

Molecular Weight: 39.44 kDa

---

UniProt: [P16150](#)

---

Pathways: [Regulation of Leukocyte Mediated Immunity](#)

## Application Details

---

Application Notes: Optimal working dilution should be determined by the investigator.

---

Restrictions: For Research Use only

## Handling

---

Format: Liquid

---

Concentration: 0.1-2 mg/mL

---

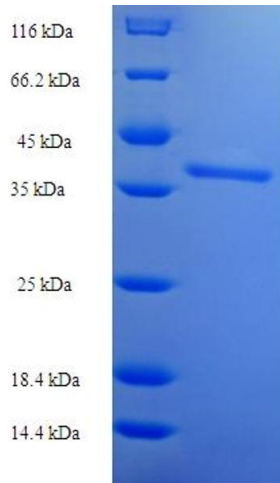
Buffer: 20 mM Tris-HCl based buffer, pH 8.0

---

Storage: -80 °C, 4 °C, -20 °C

---

Storage Comment: Store at -20°C, for extended storage, conserve at -20°C or -80°C. Repeated freezing and thawing is not recommended. Store working aliquots at 4°C for up to one week.



### SDS-PAGE

Image 1.