

Datasheet for ABIN5710418

**SRY Protein (AA 1-144, partial) (His tag)**[Go to Product page](#)**1** Image

## Overview

Quantity:	100 µg
Target:	SRY
Protein Characteristics:	AA 1-144, partial
Origin:	Mouse
Source:	Escherichia coli (E. coli)
Protein Type:	Recombinant
Purification tag / Conjugate:	This SRY protein is labelled with His tag.
Application:	SDS-PAGE (SDS)

## Product Details

Sequence:	MEGHVKRPMN AFMVWSRGER HKLAQQNPSM QNTEISKQLG CRWKSLETEAE KRPFFQEAQR LKILHREKYP NYKYQPHRRA KVSQRSGILQ PAVASTKLYN LLQWDRNPHA ITYRQDWSRA AHLYSKNQQS FYWQPVDIPT GHLQ
Purification:	SDS-PAGE
Purity:	> 90 %

## Target Details

Target:	SRY
Alternative Name:	SRY ( <a href="#">SRY Products</a> )
Background:	Transcriptional regulator that controls a genetic switch in male development. It is necessary and sufficient for initiating male sex determination by directing the development of supporting

## Target Details

cell precursors (pre-Sertoli cells) as Sertoli rather than granulosa cells. In male adult brain involved in the maintenance of motor functions of dopaminergic neurons . Involved in different aspects of gene regulation including promoter activation or repression. SRY HMG box recognizes DNA by partial intercalation in the minor groove. Promotes DNA bending. Also involved in pre-mRNA splicing . Binds to the DNA consensus sequence 5'-[AT]AACAA[AT]-3'.1  
Publication

Molecular Weight: 21.3 kDa

UniProt: [Q05738](#)

## Application Details

Application Notes: Optimal working dilution should be determined by the investigator.

Restrictions: For Research Use only

## Handling

Format: Liquid

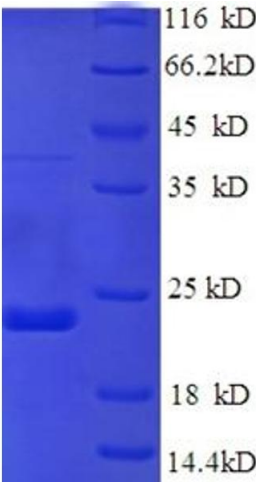
Concentration: 0.1-2 mg/mL

Buffer: 20 mM Tris-HCl based buffer, pH 8.0

Storage: -80 °C, 4 °C, -20 °C

Storage Comment: Store at -20°C, for extended storage, conserve at -20°C or -80°C. Repeated freezing and thawing is not recommended. Store working aliquots at 4°C for up to one week.

## Images



### SDS-PAGE

Image 1.