

Datasheet for ABIN5710432

Syntaxin 6 Protein (STX6) (AA 4-231, partial) (His tag)



[Go to Product page](#)

1 Image

Overview

Quantity:	100 µg
Target:	Syntaxin 6 (STX6)
Protein Characteristics:	AA 4-231, partial
Origin:	Chicken
Source:	Escherichia coli (E. coli)
Protein Type:	Recombinant
Purification tag / Conjugate:	This Syntaxin 6 protein is labelled with His tag.
Application:	SDS-PAGE (SDS)

Product Details

Sequence:	EDPFFVVKGE VQKAVNTAQQ LFQRWTELLQ DPSIATREEI DWTTNELRNN LRSIEWDLED LDETISIVEA NPRKFNLDAT ELGIRKSFIT STRQVVREMK DQMSNSSMQA LAERKNRQAL LGESSQSWS SGPDKYSRLD RELQLANSHF IEEQQAQQQL IVEQQDEQLE LVSGSIGVLK NMSQRIGGEL EEQAVMLDDF SHELDSTHSR LDNVMKKLAK VSHMTSDR
Purification:	SDS-PAGE
Purity:	> 90 %

Target Details

Target:	Syntaxin 6 (STX6)
Alternative Name:	STX6 (STX6 Products)
Background:	Involved in intracellular vesicle trafficking.

Target Details

Molecular Weight:	30.2 kDa
UniProt:	Q5ZL19
Pathways:	Synaptic Vesicle Exocytosis

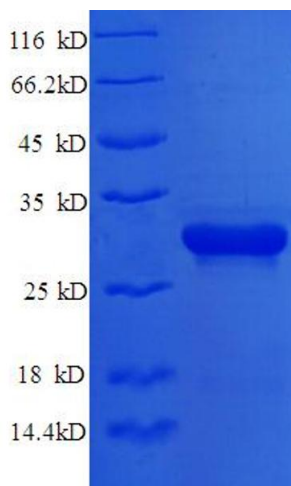
Application Details

Application Notes:	Optimal working dilution should be determined by the investigator.
Restrictions:	For Research Use only

Handling

Format:	Liquid
Concentration:	0.1-2 mg/mL
Buffer:	20 mM Tris-HCl based buffer, pH 8.0
Storage:	-80 °C, 4 °C, -20 °C
Storage Comment:	Store at -20°C, for extended storage, conserve at -20°C or -80°C. Repeated freezing and thawing is not recommended. Store working aliquots at 4°C for up to one week.

Images



SDS-PAGE

Image 1.