



[Go to Product page](#)

Datasheet for ABIN5710456

TARS2 Protein (AA 369-718, partial) (His-SUMO Tag)

1 Image

Overview

Quantity:	100 µg
Target:	TARS2
Protein Characteristics:	AA 369-718, partial
Origin:	Human
Source:	Escherichia coli (E. coli)
Protein Type:	Recombinant
Purification tag / Conjugate:	This TARS2 protein is labelled with His-SUMO Tag.
Application:	SDS-PAGE (SDS)

Product Details

Sequence:	EHYQEDMFAV QPPGSDRPPS SQSDDSTRHI TDTLALKPMN CPAHCLMFAH RPRSWRELPL RLADFGALHR AEASGGLGGL TRLRCFQQDD AHIFCTTDQL EAEIQSCLDF LRSVYAVLGF SFRLALSTRP SGFLGDPCLW DQAEQVLKQA LKEFGEPWDL NSGDGAFYGP KIDVHLHDAL GRPHQCGTIQ LDFQLPLRFD LQYKGQAGAL ERPVLIHRVAV LGSVERLLGV LAESCGGKWP LWLSPFQVVV IPVGSEQEEY AKEAQQSLRA AGLVSDLDAD SGLTLSRRIR RAQLAHYNFQ FVVGQKEQSK RTVNIRTRDN RRLGEWDLPE AVQRLVELQN TRVPNAEEIF
Purification:	SDS-PAGE
Purity:	> 90 %

Target Details

Target:	TARS2
---------	-------

Target Details

Alternative Name:	SYTM (TARS2 Products)
Molecular Weight:	55.31 kDa
UniProt:	Q9BW92
Pathways:	SARS-CoV-2 Protein Interactome

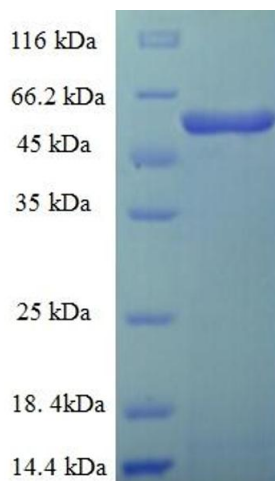
Application Details

Application Notes:	Optimal working dilution should be determined by the investigator.
Restrictions:	For Research Use only

Handling

Format:	Liquid
Concentration:	0.1-2 mg/mL
Buffer:	20 mM Tris-HCl based buffer, pH 8.0
Storage:	-80 °C, 4 °C, -20 °C
Storage Comment:	Store at -20°C, for extended storage, conserve at -20°C or -80°C. Repeated freezing and thawing is not recommended. Store working aliquots at 4°C for up to one week.

Images



SDS-PAGE

Image 1.