

Datasheet for ABIN571049  
**anti-PLGF antibody (Internal Region)**[Go to Product page](#)

## 1 Image

## Overview

Quantity:	100 µg
Target:	PLGF (PGF)
Binding Specificity:	Internal Region
Reactivity:	Human
Host:	Goat
Clonality:	Polyclonal
Conjugate:	This PLGF antibody is un-conjugated
Application:	Western Blotting (WB), ELISA

## Product Details

Purpose:	PLGF
Immunogen:	Peptide with sequence C-NVTMQLLKIRSGDR, from the internal region of the protein sequence according to NP_002623.2.
Sequence:	NVTMQLLKIR SGDR
Isotype:	IgG
Predicted Reactivity:	Human, Pig
Purification:	Purified from goat serum by ammonium sulphate precipitation followed by antigen affinity chromatography using the immunizing peptide.
Grade:	Verified

## Target Details

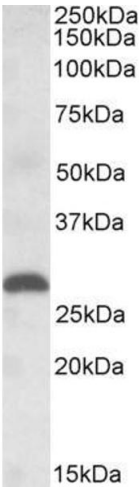
Target:	PLGF (PGF)
Alternative Name:	PGF ( <a href="#">PGF Products</a> )
Background:	PGF, placental growth factor, D12S1900, PGFL, PLGF, PIGF-2, SHGC-10760, placenta growth factor, placental growth factor, vascular endothelial growth factor-related protein, placental growth factor-like
Gene ID:	5228
NCBI Accession:	<a href="#">NP_002623</a>
Pathways:	<a href="#">VEGFR1 Specific Signals</a>

## Application Details

Application Notes:	DS WB Results: Approx 28 kDa band observed in Human Placenta lysates (calculated MW of 19.3 kDa according to NP_002623.2). The observed molecular weight corresponds to the glycosylated form. Recommended concentration: 1-3 µg/mL. Peptide ELISA: antibody detection limit dilution 1:1000.
Restrictions:	For Research Use only

## Handling

Format:	Liquid
Concentration:	0.5 mg/mL
Buffer:	Supplied at 0.5 mg/mL in Tris saline, 0.02 % sodium azide, pH 7.3 with 0.5 % bovine serum albumin.
Preservative:	Sodium azide
Precaution of Use:	This product contains Sodium azide: a POISONOUS AND HAZARDOUS SUBSTANCE which should be handled by trained staff only.
Handling Advice:	Minimize freezing and thawing.
Storage:	-20 °C
Storage Comment:	Aliquot and store at -20°C, with minimal freeze/thawing. A working aliquot may be refrigerated at 4°C for a few weeks and still remain viable.



Western Blotting

**Image 1.** ABIN571049 (1µg/ml) staining of Human Placenta lysate (35µg protein in RIPA buffer). Primary incubation was 1 hour. Detected by chemiluminescence.