



[Go to Product page](#)

Datasheet for ABIN571050  
**anti-SDHAF1 antibody (C-Term)**

2 Images

Overview

|                      |  |
|----------------------|--|
| Quantity:            | 100 µg   |
| Target:              | SDHAF1   |
| Binding Specificity: | C-Term   |
| Reactivity:          | Human  |
| Host:                | Goat   |
| Clonality:           | Polyclonal   |
| Conjugate:           | This SDHAF1 antibody is un-conjugated                    |
| Application:         | ELISA, Western Blotting (WB), Immunohistochemistry (IHC) |

Product Details

|                   |   |
|-------------------|---|
| Purpose:          | SDHAF1  |
| Immunogen:        | C-HDSTGAPETRPDGR  |
| Sequence:         | HDSTGAPETR PDGR   |
| Isotype:          | IgG   |
| Cross-Reactivity: | Dog, Human, Mouse   |
| Purification:     | Purified from goat serum by ammonium sulphate precipitation followed by antigen affinity chromatography using the immunizing peptide. |
| Grade:            | Verified  |

## Target Details

---

|                   |   |
|-------------------|---|
| Target:           | SDHAF1  |
| Alternative Name: | SDHAF1 ( <a href="#">SDHAF1 Products</a> )                |
| Background:       | SDHAF1, succinate dehydrogenase complex assembly factor 1 |
| Gene ID:          | 644096, 68332   |
| NCBI Accession:   | <a href="#">NP_001036096</a>                              |

## Application Details

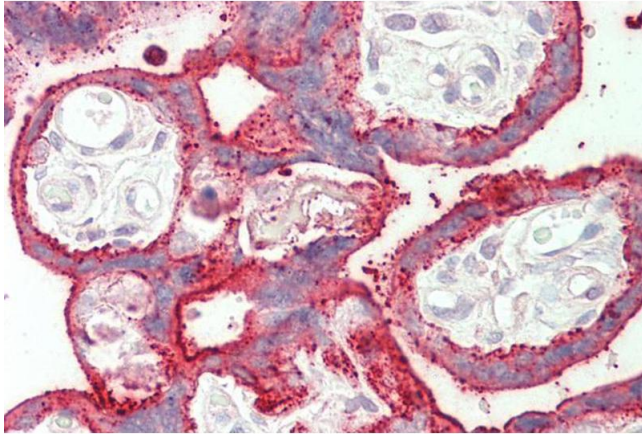
---

|                    |  |
|--------------------|--|
| Application Notes: | Immunohistochemistry: Paraffin embedded Human Placenta. Recommended concentration: 5 µg/mL.<br>Western Blot: Approx 19 kDa band observed in Human Brain (Cerebellum) lysates (calculated MW of 12.8 kDa according to NP_001036096.1). Recommended concentration: 0.3-1 µg/mL.<br>Primary incubation was 1 hour.<br>Peptide ELISA: antibody detection limit dilution 1:16000. |
| Restrictions:      | For Research Use only  |

## Handling

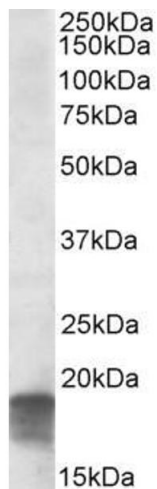
---

|                    |  |
|--------------------|--|
| Format:            | Liquid   |
| Concentration:     | 0.5 mg/mL  |
| Buffer:            | Supplied at 0.5 mg/mL in Tris saline, 0.02 % sodium azide, pH 7.3 with 0.5 % bovine serum albumin.   |
| Preservative:      | Sodium azide   |
| Precaution of Use: | This product contains Sodium azide: a POISONOUS AND HAZARDOUS SUBSTANCE which should be handled by trained staff only.                         |
| Handling Advice:   | Minimize freezing and thawing.   |
| Storage:           | -20 °C   |
| Storage Comment:   | Aliquot and store at -20°C, with minimal freeze/thawing. A working aliquot may be refrigerated at 4°C for a few weeks and still remain viable. |



### Immunohistochemistry

**Image 1.** ABIN571050 (5 $\mu$ g/ml) staining of paraffin embedded Human Placenta. Steamed antigen retrieval with citrate buffer pH 6, AP-staining.



### Western Blotting

**Image 2.** ABIN571050 (0.3 $\mu$ g/ml) staining of Human Cerebellum lysate (35 $\mu$ g protein in RIPA buffer). Detected by chemiluminescence.