

Datasheet for ABIN5710500

**TJP1 Protein (AA 1633-1769, partial) (His tag)**[Go to Product page](#)**1** Image

## Overview

Quantity:	100 µg
Target:	TJP1
Protein Characteristics:	AA 1633-1769, partial
Origin:	Dog
Source:	Escherichia coli (E. coli)
Protein Type:	Recombinant
Purification tag / Conjugate:	This TJP1 protein is labelled with His tag.
Application:	SDS-PAGE (SDS)

## Product Details

Sequence:	VVATARGVFN NNGGVLSSIE TGVSIIPQG AIPEGVEQEI YFKVCRDNSI LPPLDKEKGE TLLSPLVMCG PHGLKFLKPV ELRLPHCASM TPDGWSFALK SSDSSSGDPK TWQNKCLPGD PNYLVGANCV SVLIDHF
Purification:	SDS-PAGE
Purity:	> 90 %

## Target Details

Target:	TJP1
Alternative Name:	ZO1 ( <a href="#">TJP1 Products</a> )
Background:	The N-terminal may be involved in transducing a signal required for tight junction assbly, while the C-terminal may have specific properties of tight junctions. The alpha domain might be

## Target Details

	involved in stabilizing junctions. Plays a role in the regulation of cell migration by targeting CDC42BPB to the leading edge of migrating cells .
Molecular Weight:	18.77 kDa
UniProt:	<a href="#">O97758</a>
Pathways:	<a href="#">Carbohydrate Homeostasis</a> , <a href="#">Cell-Cell Junction Organization</a>

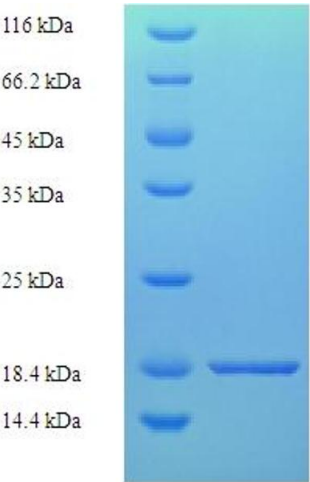
## Application Details

Application Notes:	Optimal working dilution should be determined by the investigator.
Restrictions:	For Research Use only

## Handling

Format:	Liquid
Concentration:	0.1-2 mg/mL
Buffer:	20 mM Tris-HCl based buffer, pH 8.0
Storage:	-80 °C,4 °C,-20 °C
Storage Comment:	Store at -20°C, for extended storage, conserve at -20°C or -80°C. Repeated freezing and thawing is not recommended. Store working aliquots at 4°C for up to one week.

## Images



### SDS-PAGE

Image 1.