



[Go to Product page](#)

Datasheet for ABIN5710504

## TLR7 Protein (AA 27-348, partial) (GST tag)

### 1 Image

#### Overview

Quantity:	100 µg
Target:	TLR7
Protein Characteristics:	AA 27-348, partial
Origin:	Mouse
Source:	Escherichia coli (E. coli)
Protein Type:	Recombinant
Purification tag / Conjugate:	This TLR7 protein is labelled with GST tag.
Application:	SDS-PAGE (SDS)

#### Product Details

Sequence:	FRWFPKTLPC EVKVNIPPEAH VIVDCTDKHL TEIPEGIPTN TTNLTLTINH IPSISPDSFR RLNHLEEIDL RCNCVPVLLG SKANVCTKRL QIRPGSFSGL SDLKALYLDG NQLLEIPQDL PSSLHLLSLE ANNIFSITKE NLTELVNIET LYLQGNCYYR NPCNVSYSIE KDAFLVMRNL KVLSLKDNNV TAVPTTLPPN LLELYLYNNI IKKIQENDFN NLNELQVLDL SGNCPRCYNV PYPCTPCENN SPLQIHDNAF NSLTELVKVL R LHSNSLQHPV PTWFKNMRNL QELDLSQNYL AREIEEAKFL HFLPNLVELD FS
Purification:	SDS-PAGE
Purity:	> 90 %

#### Target Details

Target:	TLR7
---------	------

## Target Details

---

Alternative Name: [TLR7 \(TLR7 Products\)](#)

Background: Key component of innate and adaptive immunity. TLRs (Toll-like receptors) control host immune response against pathogens through recognition of molecular patterns specific to microorganisms. TLR7 is a nucleotide-sensing TLR which is activated by single-stranded RNA. Acts via MYD88 and TRAF6, leading to NF-kappa-B activation, cytokine secretion and the inflammatory response.

Molecular Weight: 64.2 kDa

UniProt: [P58681](#)

Pathways: [TLR Signaling](#), [Activation of Innate immune Response](#), [Toll-Like Receptors Cascades](#)

## Application Details

---

Application Notes: Optimal working dilution should be determined by the investigator.

Restrictions: For Research Use only

## Handling

---

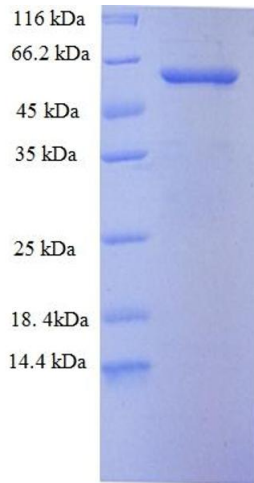
Format: Liquid

Concentration: 0.1-2 mg/mL

Buffer: 20 mM Tris-HCl based buffer, pH 8.0

Storage: -80 °C, 4 °C, -20 °C

Storage Comment: Store at -20°C, for extended storage, conserve at -20°C or -80°C. Repeated freezing and thawing is not recommended. Store working aliquots at 4°C for up to one week.



**SDS-PAGE**

**Image 1.**