

Datasheet for ABIN571051  
**anti-SUMF1 antibody (Internal Region)**[Go to Product page](#)

## 1 Image

## Overview

Quantity:	100 µg
Target:	SUMF1
Binding Specificity:	Internal Region
Reactivity:	Human, Mouse
Host:	Goat
Clonality:	Polyclonal
Application:	Western Blotting (WB), ELISA

## Product Details

Purpose:	SUMF1
Immunogen:	C-ETLNPKGPPSGKDR
Sequence:	ETLNPKGPPS GKDR
Isotype:	IgG
Cross-Reactivity:	Cow, Dog, Human, Mouse, Rat
Purification:	Purified from goat serum by ammonium sulphate precipitation followed by antigen affinity chromatography using the immunizing peptide.
Grade:	Verified

## Target Details

Target:	SUMF1
---------	-------

## Target Details

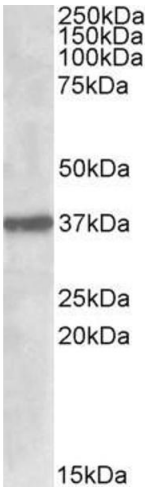
Alternative Name:	SUMF1 ( <a href="#">SUMF1 Products</a> )
Background:	SUMF1, sulfatase modifying factor 1, AAPA3037, FGE, MGC131853, MGC150436, C-alpha-formylglycine-generating enzyme, OTTHUMP00000115300
Gene ID:	285362, 58911, 362409
NCBI Accession:	<a href="#">NP_877437</a>

## Application Details

Application Notes:	Western Blot: Approx 37-40 kDa band observed in Mouse Pancreas, Mouse Eye and Human Kidney lysates (calculated MW of 40.6 kDa according to Human NP_877437.2 and 40.6 kDa according to Mouse NP_666049.2). Recommended concentration: 0.5-2 µg/mL. Peptide ELISA: antibody detection limit dilution 1:16000.
Restrictions:	For Research Use only

## Handling

Format:	Liquid
Concentration:	0.5 mg/mL
Buffer:	Supplied at 0.5 mg/mL in Tris saline, 0.02 % sodium azide, pH 7.3 with 0.5 % bovine serum albumin.
Preservative:	Sodium azide
Precaution of Use:	This product contains Sodium azide: a POISONOUS AND HAZARDOUS SUBSTANCE which should be handled by trained staff only.
Handling Advice:	Minimize freezing and thawing.
Storage:	-20 °C
Storage Comment:	Aliquot and store at -20°C, with minimal freeze/thawing. A working aliquot may be refrigerated at 4°C for a few weeks and still remain viable.



Western Blotting

**Image 1.** ABIN571051 (1µg/ml) staining of Mouse Pancreas lysate (35µg protein in RIPA buffer). Primary incubation was 1 hour. Detected by chemiluminescence.