

Datasheet for ABIN5710510

**TMEM25 Protein (AA 27-322, Isoform 2) (His-SUMO Tag)**[Go to Product page](#)**1** Image

## Overview

|                               |  |
|-------------------------------|--|
| Quantity:                     | 100 µg   |
| Target:                       | TMEM25   |
| Protein Characteristics:      | Isoform 2, AA 27-322                               |
| Origin:                       | Human  |
| Source:                       | Escherichia coli (E. coli)                         |
| Protein Type:                 | Recombinant  |
| Purification tag / Conjugate: | This TMEM25 protein is labelled with His-SUMO Tag. |
| Application:                  | SDS-PAGE (SDS)                                     |

## Product Details

|               |   |
|---------------|---|
| Sequence:     | ELEPQIDGQT WAERALRENE RHAFTCRVAG GPGTPRLAWY LDGQLQEAST SRLLSVGGEA<br>FSGGTSTFTV TAHRAQHELN CSLQDPRSGR SANASVILNV QFKPEIAQVG AKYQEAQGPG<br>LLVVLFAVLR ANPPANVTWI DQDGPVTVNT SDFVLVDAQN YPWLNTHTVQ LQLRSLAHNL<br>SVVATNDVGV TSASLPAPGP SRHPSLISSD SNNLKLNNVR LPRENMSLPS NLQLNDLTPD<br>SRAVKPADRQ MAQNNSRPEL LDPEPGGLLT SRGFIRLPVL GYIYRVSSVS SDEIWL |
| Purification: | SDS-PAGE  |
| Purity:       | > 90 %  |

## Target Details

|                   |   |
|-------------------|---|
| Target:           | TMEM25                                    |
| Alternative Name: | TMM25 ( <a href="#">TMEM25 Products</a> ) |

## Target Details

Molecular Weight: 48.2 kDa

UniProt: [Q86YD3](#)

## Application Details

Application Notes: Optimal working dilution should be determined by the investigator.

Restrictions: For Research Use only

## Handling

Format: Liquid

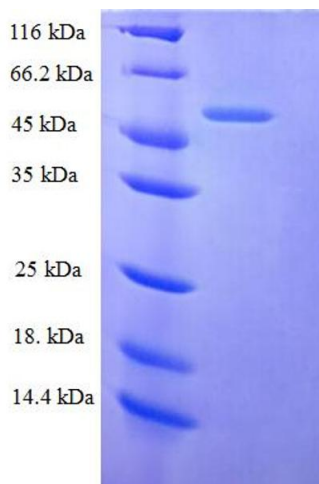
Concentration: 0.1-2 mg/mL

Buffer: 20 mM Tris-HCl based buffer, pH 8.0

Storage: -80 °C, 4 °C, -20 °C

Storage Comment: Store at -20°C, for extended storage, conserve at -20°C or -80°C. Repeated freezing and thawing is not recommended. Store working aliquots at 4°C for up to one week.

## Images



### SDS-PAGE

Image 1.