

Datasheet for ABIN571052 anti-CYB5R3 antibody (C-Term)



[Go to Product page](#)

1 Image

Overview

Quantity:	100 µg
Target:	CYB5R3
Binding Specificity:	C-Term
Reactivity:	Mouse
Host:	Goat
Clonality:	Polyclonal
Conjugate:	This CYB5R3 antibody is un-conjugated
Application:	Western Blotting (WB), ELISA

Product Details

Purpose:	CYB5R3 / Dia 1 (mouse)
Immunogen:	Peptide with sequence PNLERVGHPKERC, from the C Terminus of the protein sequence according to NP_084063.1.
Sequence:	PNLERVGHPK ERC
Isotype:	IgG
Cross-Reactivity:	Cow, Dog, Mouse, Rat
Purification:	Purified from goat serum by ammonium sulphate precipitation followed by antigen affinity chromatography using the immunizing peptide.
Grade:	Verified

Target Details

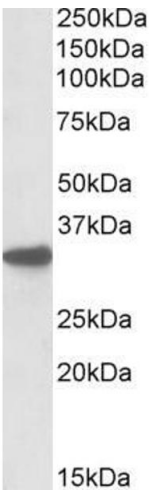
Target:	CYB5R3
Alternative Name:	Cyb5r3 (CYB5R3 Products)
Background:	Cyb5r3, cytochrome b5 reductase 3, 0610016L08Rik, 2500002N19Rik, C85115, Dia-1, Dia1, WU:AL591952.1-001, WU:AL591952.1-002, WU:AL591952.1-003, WU:Cyb5r3, NADH-cytochrome b5 reductase, diaphorase 1, diaphorase 1 (NADH)
Gene ID:	109754, 25035
NCBI Accession:	NP_084063
Pathways:	SARS-CoV-2 Protein Interactome

Application Details

Application Notes:	Western Blot: Approx 35 kDa band observed in Mouse Liver lysates as well as in mouse and rat brain lysates (calculated MW of 34.1 kDa according to mouse NP_084063.1). Recommended concentration: 0.1-1 µg/mL. Peptide ELISA: antibody detection limit dilution 1:32000.
Restrictions:	For Research Use only

Handling

Format:	Liquid
Concentration:	0.5 mg/mL
Buffer:	Supplied at 0.5 mg/mL in Tris saline, 0.02 % sodium azide, pH 7.3 with 0.5 % bovine serum albumin.
Preservative:	Sodium azide
Precaution of Use:	This product contains Sodium azide: a POISONOUS AND HAZARDOUS SUBSTANCE which should be handled by trained staff only.
Handling Advice:	Minimize freezing and thawing.
Storage:	-20 °C
Storage Comment:	Aliquot and store at -20°C, with minimal freeze/thawing. A working aliquot may be refrigerated at 4°C for a few weeks and still remain viable.



Western Blotting

Image 1. ABIN571052 (0.1µg/ml) staining of Mouse Liver lysate (RIPA buffer, 35µg total protein per lane). Primary incubated for 1 hour. Detected by western blot using chemiluminescence.