



[Go to Product page](#)

Datasheet for ABIN5710558

## TTHY Protein (AA 21-147) (His tag)

### 1 Image

#### Overview

Quantity:	100 µg
Target:	TTHY
Protein Characteristics:	AA 21-147
Origin:	Human
Source:	Escherichia coli (E. coli)
Protein Type:	Recombinant
Purification tag / Conjugate:	This TTHY protein is labelled with His tag.
Application:	SDS-PAGE (SDS)

#### Product Details

Sequence:	GPTGTGESKC PLMVKVLDAV RGSPAINVAV HVFRKAADD T WEPFASGKTS ESGELHGLTT EEEFVEGIYK VEIDTKSYWK ALGISPFHEH AEVVFTANDS GPRRYTIAAL LSPYSYSTTA VVTNPKE
Purification:	SDS-PAGE
Purity:	> 90 %

#### Target Details

Target:	TTHY
Alternative Name:	TTHY ( <a href="#">TTHY Products</a> )
Background:	Thyroid hormone-binding protein. Probably transports thyroxine from the bloodstream to the brain.

## Target Details

Molecular Weight: 17.9 kDa

UniProt: [P02766](#)

## Application Details

Application Notes: Optimal working dilution should be determined by the investigator.

Restrictions: For Research Use only

## Handling

Format: Liquid

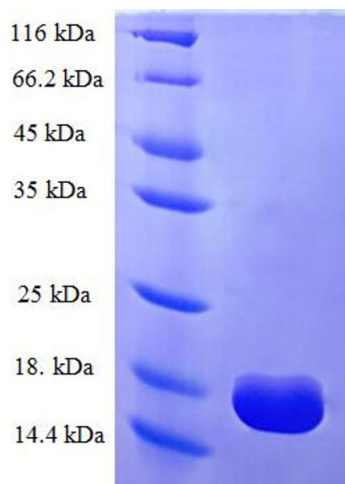
Concentration: 0.1-2 mg/mL

Buffer: 20 mM Tris-HCl based buffer, pH 8.0

Storage: -80 °C, 4 °C, -20 °C

Storage Comment: Store at -20°C, for extended storage, conserve at -20°C or -80°C. Repeated freezing and thawing is not recommended. Store working aliquots at 4°C for up to one week.

## Images



### SDS-PAGE

Image 1.