



[Go to Product page](#)

Datasheet for ABIN5710560

TTHY Protein (AA 23-147, partial) (His-SUMO Tag)

1 Image

Overview

Quantity:	100 µg
Target:	TTHY
Protein Characteristics:	AA 23-147, partial
Origin:	Mouse
Source:	Escherichia coli (E. coli)
Protein Type:	Recombinant
Purification tag / Conjugate:	This TTHY protein is labelled with His-SUMO Tag.
Application:	SDS-PAGE (SDS)

Product Details

Sequence:	AGAGESKCPL MVKVLDAVRG SPAVDVAVKV FKKTSEGSWE PFASGKTAES GELHGLTTDE KFVEGVYRVE LDTKSYWKTL GISPFHEFAD VVFTANDSGH RHYTIAALLS PYSYSTTAVV SNPQN
Purification:	SDS-PAGE
Purity:	> 90 %

Target Details

Target:	TTHY
Alternative Name:	TTHY (TTHY Products)
Background:	Thyroid hormone-binding protein. Probably transports thyroxine from the bloodstream to the brain.

Target Details

Molecular Weight: 29.5 kDa

UniProt: [P07309](#)

Application Details

Application Notes: Optimal working dilution should be determined by the investigator.

Restrictions: For Research Use only

Handling

Format: Liquid

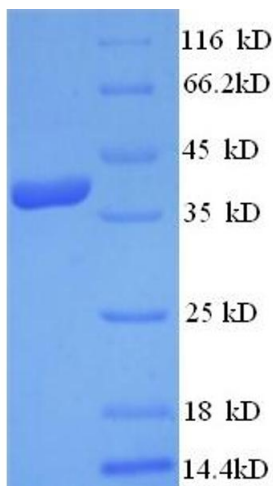
Concentration: 0.1-2 mg/mL

Buffer: 20 mM Tris-HCl based buffer, pH 8.0

Storage: -80 °C, 4 °C, -20 °C

Storage Comment: Store at -20°C, for extended storage, conserve at -20°C or -80°C. Repeated freezing and thawing is not recommended. Store working aliquots at 4°C for up to one week.

Images



SDS-PAGE

Image 1.