

Datasheet for ABIN5710579
anti-CD3 antibody



[Go to Product page](#)

4 Images

Overview

Quantity:	100 µg
Target:	CD3
Reactivity:	Human
Host:	Mouse
Clonality:	Monoclonal
Conjugate:	This CD3 antibody is un-conjugated
Application:	Flow Cytometry (FACS), Immunocytochemistry (ICC)

Product Details

Purpose:	Anti-Hu CD3 Purified
Clone:	TB3
Isotype:	IgG2b kappa
Specificity:	The mouse monoclonal antibody TB3 recognizes an extracellular epitope on CD3 antigen of the TCR/CD3 complex on mature human T cells. This antibody has superior binding than the clone TB2.
Cross-Reactivity (Details):	Human
Purification:	Purified by protein-A affinity chromatography.
Purity:	> 95 % (by SDS-PAGE)

Target Details

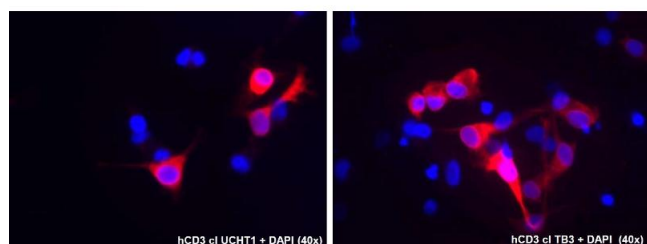
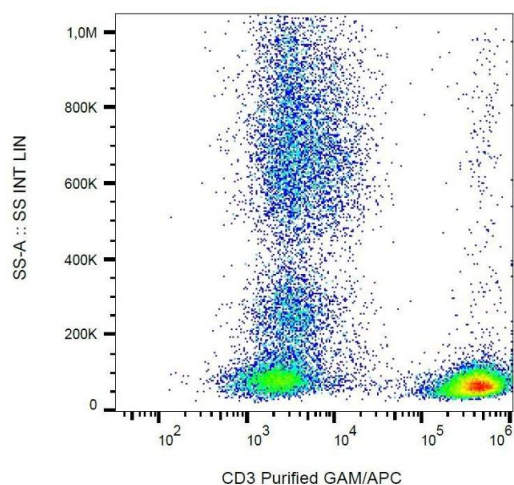
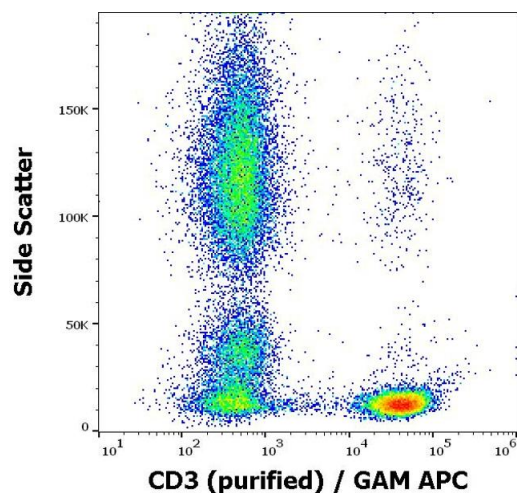
Target:	CD3
Alternative Name:	CD3 (CD3 Products)
Background:	<p>CD3 antigen, epsilon polypeptide, CD3 complex is crucial in transducing antigen-recognition signals into the cytoplasm of T cells and in regulating the cell surface expression of the TCR complex. T cell activation through the antigen receptor (TCR) involves the cytoplasmic tails of the CD3 subunits CD3 gamma, CD3 delta, CD3 epsilon and CD3 zeta. These CD3 subunits are structurally related members of the immunoglobulins super family encoded by closely linked genes on human chromosome 11. The CD3 components have long cytoplasmic tails that associate with cytoplasmic signal transduction molecules. This association is mediated at least in part by a double tyrosine-based motif present in a single copy in the CD3 subunits. CD3 may play a role in TCR-induced growth arrest, cell survival and proliferation. The CD3 antigen is present on 68-82 % of normal peripheral blood lymphocytes, 65-85 % of thymocytes and Purkinje cells in the cerebellum. It is never expressed on B or NK cells. Decreased percentages of T lymphocytes may be observed in some autoimmune diseases., CD3E, T3E, TCRE</p>
Gene ID:	916
UniProt:	P07766
Pathways:	TCR Signaling , Ubiquitin Proteasome Pathway

Application Details

Application Notes:	Flow cytometry: Recommended dilution: 1-4 µg/mL.
Restrictions:	For Research Use only

Handling

Concentration:	1 mg/mL
Buffer:	Phosphate buffered saline (PBS), pH 7.4, 15 mM sodium azide
Preservative:	Sodium azide
Precaution of Use:	This product contains Sodium azide: a POISONOUS AND HAZARDOUS SUBSTANCE which should be handled by trained staff only.
Storage:	4 °C
Storage Comment:	Store at 2-8°C. Do not freeze.



Flow Cytometry

Image 1. Flow cytometry surface staining pattern of human peripheral whole blood stained using anti-human CD3 (TB3) purified antibody (concentration in sample 0,3 µg/mL) GAM APC.

Flow Cytometry

Image 2. Surface staining of human buffy coat cells with anti-CD3 (TB3) purified / GAM-APC.

Immunocytochemistry

Image 3. Immunocytochemistry staining of human CD3 epsilon and CD3 gamma transfected COS cells using mouse monoclonal antibodies anti-CD3, clones UCHT1 (left) and TB3 (right) indicated by Alexa Fluor 555 signal (red), DNA stained by DAPI (blue).

Please check the [product details page](#) for more images. Overall 4 images are available for ABIN5710579.