

Datasheet for ABIN571061

anti-KCNN2 antibody (Internal Region)**3** Images[Go to Product page](#)

Overview

Quantity:	100 µg
Target:	KCNN2
Binding Specificity:	Internal Region
Reactivity:	Human
Host:	Goat
Clonality:	Polyclonal
Conjugate:	This KCNN2 antibody is un-conjugated
Application:	Western Blotting (WB), Immunohistochemistry (IHC), ELISA

Product Details

Purpose:	KCNN2
Immunogen:	Peptide with sequence C-ESYDKHVTYNAER, from the internal region of the protein sequence according to NP_067627.2, NP_740721.1.
Sequence:	ESYDKHVTYN AER
Isotype:	IgG
Specificity:	This antibody is expected to recognize both isoforms (NP_067627.2, NP_740721.1).
Cross-Reactivity:	Cow, Dog, Human, Mouse, Rat
Purification:	Purified from goat serum by ammonium sulphate precipitation followed by antigen affinity chromatography using the immunizing peptide.
Grade:	Verified

Target Details

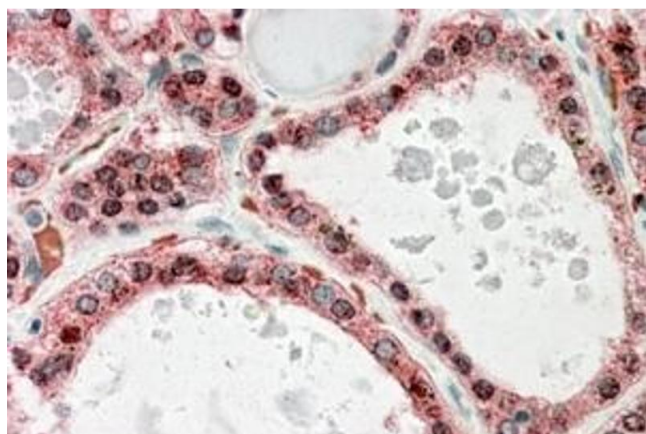
Target:	KCNN2
Alternative Name:	KCNN2 (KCNN2 Products)
Background:	KCNN2, potassium intermediate/small conductance calcium-activated channel, subfamily N, member 2, KCa2.2, SK2, SKCA2, hSK2, apamin-sensitive small-conductance Ca ²⁺ -activated potassium channel, small conductance calcium-activated potassium channel protein
Gene ID:	3781, 140492, 54262
NCBI Accession:	NP_067627 , NP_740721

Application Details

Application Notes:	Immunohistochemistry: Paraffin embedded Human Thyroid Gland and Kidney. Recommended concentration: 3.75 µg/mL. Western Blot: Approx 70 kDa and 23 kDa bands observed in Human Liver lysates (calculated MW of 63.8 kDa according to NP_067627.2 and of 26.3 kDa according to NP_740721.1). Recommended concentration: 0.3-1 µg/mL. Peptide ELISA: antibody detection limit dilution 1:64000.
Restrictions:	For Research Use only

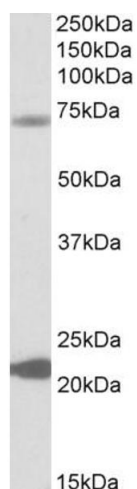
Handling

Format:	Liquid
Concentration:	0.5 mg/mL
Buffer:	Supplied at 0.5 mg/mL in Tris saline, 0.02 % sodium azide, pH 7.3 with 0.5 % bovine serum albumin.
Preservative:	Sodium azide
Precaution of Use:	This product contains Sodium azide: a POISONOUS AND HAZARDOUS SUBSTANCE which should be handled by trained staff only.
Handling Advice:	Minimize freezing and thawing.
Storage:	-20 °C
Storage Comment:	Aliquot and store at -20°C, with minimal freeze/thawing. A working aliquot may be refrigerated at 4°C for a few weeks and still remain viable.



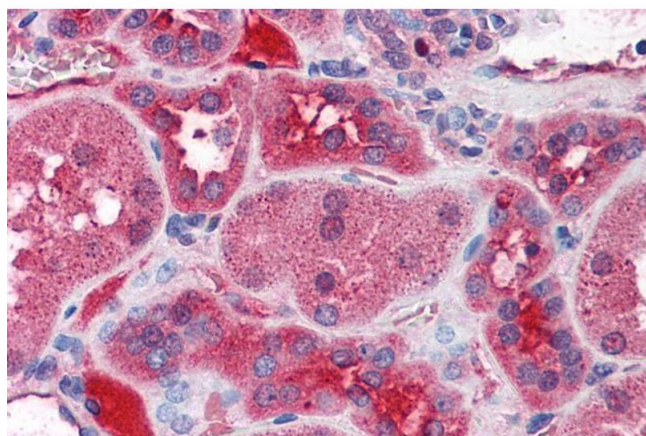
Immunohistochemistry

Image 1. ABIN571061 (3.75µg/ml) staining of paraffin embedded Human Thyroid Gland. Steamed antigen retrieval with citrate buffer pH 6, AP-staining.



Western Blotting

Image 2. ABIN571061 (0.3µg/ml) staining of Human Liver lysate (35µg protein in RIPA buffer). Primary incubation was 1 hour. Detected by chemiluminescence.



Immunohistochemistry

Image 3. ABIN571061 (3.75µg/ml) staining of paraffin embedded Human Kidney. Steamed antigen retrieval with citrate buffer pH 6, AP-staining.