

Datasheet for ABIN571072
anti-PRDM1 antibody (Internal Region)

5 Images

[Go to Product page](#)

Overview

Quantity:	100 µg
Target:	PRDM1
Binding Specificity:	Internal Region
Reactivity:	Human
Host:	Goat
Clonality:	Polyclonal
Conjugate:	This PRDM1 antibody is un-conjugated
Application:	Western Blotting (WB), ELISA, Immunohistochemistry (IHC), Immunofluorescence (IF), Flow Cytometry (FACS)

Product Details

Purpose:	PRDM1 / MEL1
Immunogen:	Peptide with sequence C-DISDNADRLEDVED, from the internal region of the protein sequence according to NP_001189.2, NP_878911.1.
Sequence:	DISDNADRLE DVED
Isotype:	IgG
Specificity:	This antibody is expected to recognize both reported isoforms (NP_001189.2, NP_878911.1).
Cross-Reactivity:	Cow, Dog, Human, Mouse, Pig, Rat
Purification:	Purified from goat serum by ammonium sulphate precipitation followed by antigen affinity chromatography using the immunizing peptide.

Product Details

Grade: Verified

Target Details

Target:	PRDM1
Alternative Name:	PRDM1 (PRDM1 Products)
Background:	PRDM1, PR domain containing 1, with ZNF domain, BLIMP1, MGC118922, MGC118923, MGC118924, MGC118925, PRDI-BF1, B-lymphocyte-induced maturation protein 1, OTTHUMP00000016918, PR-domain zinc finger protein 1, PRDI-binding factor-1, beta-interferon gene posit
Gene ID:	639, 12142, 309871
NCBI Accession:	NP_001189 , NP_878911
Pathways:	Regulation of Muscle Cell Differentiation

Application Details

Application Notes:	Immunohistochemistry: Paraffin embedded Human Testis. Recommended concentration: 6 µg/mL. Western Blot: Approx 90 kDa band observed in lysates of cell lines A431 and Nuclear K562, and approx. 100 kDa in lysates of cell line K562. An additional faint band of approx 70 kDa was also seen in some A431 and K562 lysates (calculated MW of 91.8 kDa accor Peptide ELISA: antibody detection limit dilution 1:1000.
Comment:	Immunofluorescence: Strong expression of the protein seen in the nuclei of HeLa cells. Recommended concentration: 10µg/ml. Flow Cytometry: Flow cytometric analysis of A431 cells. Recommended concentration: 10ug/ml.
Restrictions:	For Research Use only

Handling

Format:	Liquid
Concentration:	0.5 mg/mL
Buffer:	Supplied at 0.5 mg/mL in Tris saline, 0.02 % sodium azide, pH 7.3 with 0.5 % bovine serum albumin.

Handling

Preservative:	Sodium azide
Precaution of Use:	This product contains Sodium azide: a POISONOUS AND HAZARDOUS SUBSTANCE which should be handled by trained staff only.
Handling Advice:	Minimize freezing and thawing.
Storage:	-20 °C
Storage Comment:	Aliquot and store at -20°C, with minimal freeze/thawing. A working aliquot may be refrigerated at 4°C for a few weeks and still remain viable.

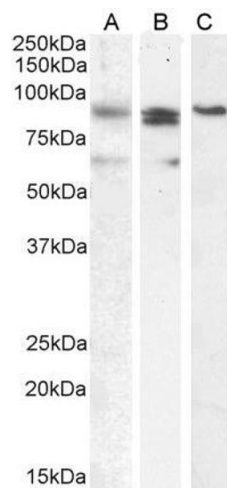
Images



Image 1. (0.3µg/ml) staining of A431 lysate (35µg protein in RIPA buffer). Primary incubation was 1 hour. Detected by chemiluminescence.

Western Blotting

Image 2. ABIN571072 (0.5µg/ml) staining of A431 lysate (35µg protein in RIPA buffer). Detected by chemiluminescence.



Western Blotting

Image 3. ABIN571072 (0.1µg/ml) staining of A431 (A), (2ug/ml) K562 (B) and (1ug/ml) Nuclear K562 (C) cell lysate (35µg protein in RIPA buffer). Detected by chemiluminescence.

Please check the [product details page](#) for more images. Overall 5 images are available for ABIN571072.