

Datasheet for ABIN5710744

## Malic Enzyme Complex, Mitochondrial (Mod2) (AA 1084-1419) protein (His-SUMO Tag)



[Go to Product page](#)

### 1 Image

#### Overview

Quantity:	100 µg
Target:	Malic Enzyme Complex, Mitochondrial (Mod2)
Protein Characteristics:	AA 1084-1419
Origin:	Plasmodium falciparum
Source:	Escherichia coli (E. coli)
Protein Type:	Recombinant
Purification tag / Conjugate:	His-SUMO Tag
Application:	SDS-PAGE (SDS)

#### Product Details

Sequence:	KGDSENAKLS FEKYYP LMIR KSNIDVRDDG GIRINKNLIK GKVDIKDVNF RYISRPNVPI YKNLSFTCDS KKTTAIVGET GSGKSTFMNL LLRFYDLKND HIILKNDMTN FQDYQNNNNN SLVLKKNVNEF SNQSGSAEDY TVFNNGEIL LDDINICDYN LRDLRNLF SI VSQEPMLFNM SIYENIKFGR EDATLEDV KR VSKFAAIDEF IESLPNKYDT NVGPYGKSLS GGQKQRIAIA RALLREPKIL LLDEATSSLD SNSEKLIKT IVDIKDKADK TIITIAHRIA SIKRSDKIVV FNNPDRNGTF VQSHGTHDEL LSAQDGIYKK YVKLAK
Purification:	SDS-PAGE
Purity:	> 90 %

#### Target Details

Target:	Malic Enzyme Complex, Mitochondrial (Mod2)
---------	--

## Target Details

Alternative Name:	MDR ( <a href="#">Mod2 Products</a> )
Background:	Energy-dependent efflux pump responsible for decreased drug accumulation in multidrug-resistant cells.
Molecular Weight:	54.17 kDa
UniProt:	<a href="#">P13568</a>

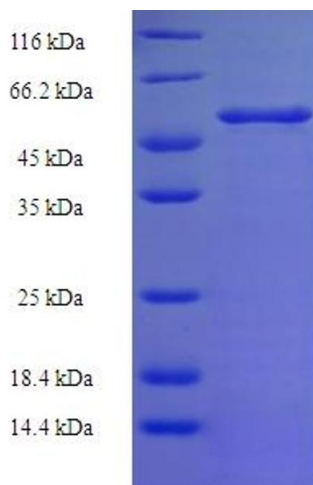
## Application Details

Application Notes:	Optimal working dilution should be determined by the investigator.
Restrictions:	For Research Use only

## Handling

Format:	Liquid
Concentration:	0.1-2 mg/mL
Buffer:	20 mM Tris-HCl based buffer, pH 8.0
Storage:	-80 °C, 4 °C, -20 °C
Storage Comment:	Store at -20°C, for extended storage, conserve at -20°C or -80°C. Repeated freezing and thawing is not recommended. Store working aliquots at 4°C for up to one week.

## Images



### SDS-PAGE

Image 1.