

Datasheet for ABIN571078
anti-CPT2 antibody (AA 141-154)



[Go to Product page](#)

3 Images

Overview

Quantity:	100 µg
Target:	CPT2
Binding Specificity:	AA 141-154
Reactivity:	Human, Mouse, Rat
Host:	Goat
Clonality:	Polyclonal
Conjugate:	This CPT2 antibody is un-conjugated
Application:	Western Blotting (WB), ELISA

Product Details

Purpose:	CPT2 (aa141-154)
Immunogen:	Peptide with sequence C-PKSEYNDQLTRATN, from the internal region of the protein sequence according to NP_000089.1.
Sequence:	PKSEYNDQLT RATN
Isotype:	IgG
Cross-Reactivity:	Cow, Dog, Human, Mouse, Pig, Rat
Purification:	Purified from goat serum by ammonium sulphate precipitation followed by antigen affinity chromatography using the immunizing peptide.
Grade:	Verified

Target Details

Target:	CPT2
Alternative Name:	CPT2 (CPT2 Products)
Background:	CPT2, carnitine palmitoyltransferase II, CPT1, CPTASE, OTTHUMP00000010493, carnitine O-palmitoyltransferase
Gene ID:	1376
NCBI Accession:	NP_000089
Pathways:	Regulation of Lipid Metabolism by PPARalpha , Monocarboxylic Acid Catabolic Process

Application Details

Application Notes:	Western Blot: Approx 75 kDa band observed in Rat Heart and in Mouse Liver lysates and approx 70-75 kDa doublet in Human Liver lysates (calculated MW of 73.8 kDa according to Human NP_000089.1 and 74.0 kDa according to Mouse NP_034079.2 and Rat NP_037062.1) Peptide ELISA: antibody detection limit dilution 1:16000.
Restrictions:	For Research Use only

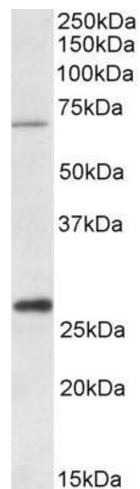
Handling

Format:	Liquid
Concentration:	0.5 mg/mL
Buffer:	Supplied at 0.5 mg/mL in Tris saline, 0.02 % sodium azide, pH 7.3 with 0.5 % bovine serum albumin.
Preservative:	Sodium azide
Precaution of Use:	This product contains Sodium azide: a POISONOUS AND HAZARDOUS SUBSTANCE which should be handled by trained staff only.
Handling Advice:	Minimize freezing and thawing.
Storage:	-20 °C
Storage Comment:	Aliquot and store at -20°C, with minimal freeze/thawing. A working aliquot may be refrigerated at 4°C for a few weeks and still remain viable.



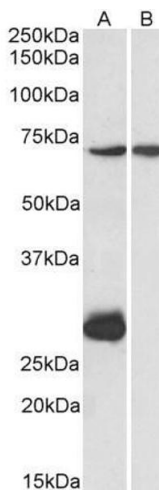
Western Blotting

Image 1. ABIN571078 (2 µg/mL) staining of Human Liver (A), Mouse Liver (B) and (1 µg/mL) on Rat Heart (C) lysate (35 µg protein in RIPA buffer). Detected by Chemiluminescence.



Western Blotting

Image 2. ABIN571078 (1µg/ml) staining of Human Liver lysate (35µg protein in RIPA buffer).Detected by Chemiluminescence.



Western Blotting

Image 3. ABIN571078 (1µg/ml) staining of Mouse Heart (A) and Liver (B) lysate (35µg protein in RIPA buffer). Detected by chemiluminescence.