

Datasheet for ABIN571080
anti-GPI antibody (AA 81-93)

5 Images

[Go to Product page](#)

Overview

Quantity:	100 µg
Target:	GPI
Binding Specificity:	AA 81-93
Reactivity:	Human
Host:	Goat
Clonality:	Polyclonal
Conjugate:	This GPI antibody is un-conjugated
Application:	Western Blotting (WB), ELISA, Immunohistochemistry (IHC)

Product Details

Purpose:	GPI / Neuroleukin (aa81-93)
Immunogen:	Peptide with sequence C-RERMFNGEKINYT, from the internal region (near N Terminus) of the protein sequence according to NP_000166.2.
Sequence:	RERMFNGEKI NYT
Isotype:	IgG
Cross-Reactivity:	Human
Purification:	Purified from goat serum by ammonium sulphate precipitation followed by antigen affinity chromatography using the immunizing peptide.
Grade:	Verified

Target Details

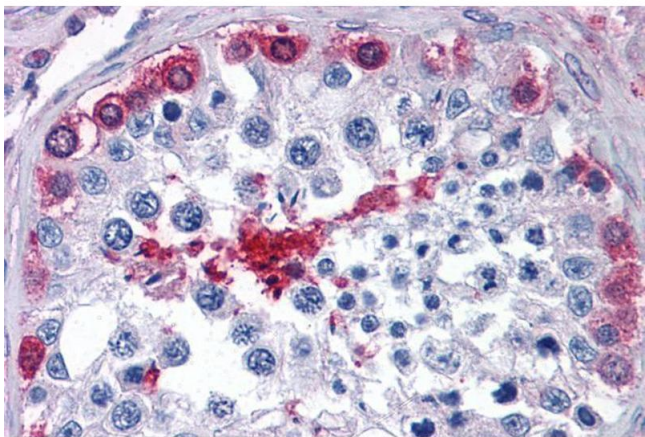
Target:	GPI
Alternative Name:	GPI (GPI Products)
Target Type:	Viral Protein
Background:	GPI, glucose phosphate isomerase, AMF, GNPI, NLK, PGI, PHI, SA-36, autocrine motility factor, glucose-6-phosphate isomerase, hexose monophosphate isomerase, hexosephosphate isomerase, neuroleukin, oxoisomerase, phosphoglucose isomerase, phosphohexomutase,
Gene ID:	2821
NCBI Accession:	NP_000166

Application Details

Application Notes:	Immunohistochemistry: Paraffin embedded Human Testis, Thyroid and Kidney. Recommended concentration: 3.75 µg/mL. Western Blot: Approx 60 kDa band observed in Human Heart lysates and approx 55 kDa observed in lysates of cell lines HeLa, A431, A549, MCF7, Jurkat and K562 (calculated MW of 63.1 kDa according to NP_000166.2). Recommended concentration: 0.1-0.3 µg/mL. Prim Peptide ELISA: antibody detection limit dilution 1:128000.
Restrictions:	For Research Use only

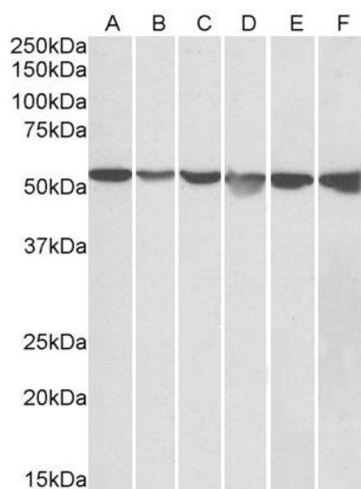
Handling

Format:	Liquid
Concentration:	0.5 mg/mL
Buffer:	Supplied at 0.5 mg/mL in Tris saline, 0.02 % sodium azide, pH 7.3 with 0.5 % bovine serum albumin.
Preservative:	Sodium azide
Precaution of Use:	This product contains Sodium azide: a POISONOUS AND HAZARDOUS SUBSTANCE which should be handled by trained staff only.
Handling Advice:	Minimize freezing and thawing.
Storage:	-20 °C
Storage Comment:	Aliquot and store at -20°C, with minimal freeze/thawing. A working aliquot may be refrigerated at 4°C for a few weeks and still remain viable.



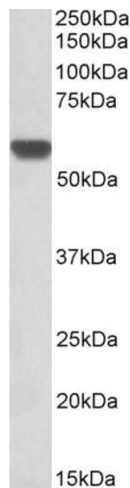
Immunohistochemistry

Image 1. ABIN571080 (3.75µg/ml) staining of paraffin embedded Human Testis. Steamed antigen retrieval with citrate buffer pH 6, AP-staining.



Western Blotting

Image 2. ABIN571080 (0.05µg/ml) staining of HeLa (A), A431 (B), A549 (C), MCF7 (D), Jurkat (E) and K562 (F) lysates (35µg protein in RIPA buffer). Detected by chemiluminescence.



Western Blotting

Image 3. ABIN571080 (0.3µg/ml) staining of Human Heart lysate (35µg protein in RIPA buffer). Detected by chemiluminescence.

Please check the [product details page](#) for more images. Overall 5 images are available for ABIN571080.