

Datasheet for ABIN571082  
**anti-ACAT1 antibody (AA 257-269)**

## 2 Images

[Go to Product page](#)

## Overview

Quantity:	100 µg
Target:	ACAT1
Binding Specificity:	AA 257-269
Reactivity:	Human, Mouse, Rat
Host:	Goat
Clonality:	Polyclonal
Conjugate:	This ACAT1 antibody is un-conjugated
Application:	Western Blotting (WB), ELISA, Immunofluorescence (IF)

## Product Details

Purpose:	ACAT1 (aa257-269)
Immunogen:	Peptide with sequence C-KRVDFSKVPLKT, from the internal region of the protein sequence according to NP_000010.1.
Sequence:	KRVDFSKVPLKT
Isotype:	IgG
Cross-Reactivity:	Cow, Human, Mouse, Rat
Purification:	Purified from goat serum by ammonium sulphate precipitation followed by antigen affinity chromatography using the immunizing peptide.
Grade:	Verified

## Target Details

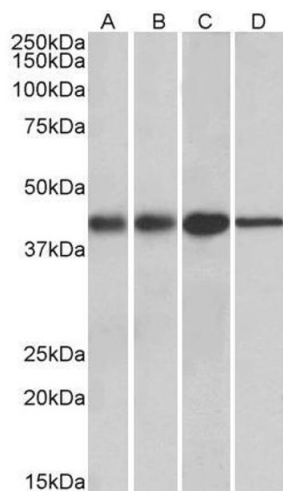
Target:	ACAT1
Alternative Name:	ACAT1 ( <a href="#">ACAT1 Products</a> )
Background:	ACAT1, acetyl-Coenzyme A acetyltransferase 1, ACAT, MAT, T2, THIL, acetoacetyl Coenzyme A thiolase
Gene ID:	38, 110446, 25014
NCBI Accession:	<a href="#">NP_000010</a>

## Application Details

Application Notes:	Western Blot: Approx 45 kDa band observed in Human Liver lysates and in rodent Kidney and Liver lysates (calculated MW of 45.2 kDa according to NP_000010.1). Recommended concentration: 0.01-0.03 µg/mL. Peptide ELISA: antibody detection limit dilution 1:8000.
Comment:	<b>Immunofluorescence:</b> Customer finds particulate cytoplasm staining in HeLa
Restrictions:	For Research Use only

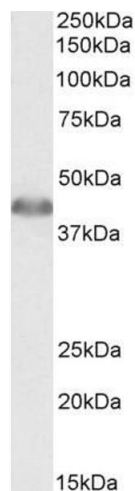
## Handling

Format:	Liquid
Concentration:	0.5 mg/mL
Buffer:	Supplied at 0.5 mg/mL in Tris saline, 0.02 % sodium azide, pH 7.3 with 0.5 % bovine serum albumin.
Preservative:	Sodium azide
Precaution of Use:	This product contains Sodium azide: a POISONOUS AND HAZARDOUS SUBSTANCE which should be handled by trained staff only.
Handling Advice:	Minimize freezing and thawing.
Storage:	-20 °C
Storage Comment:	Aliquot and store at -20°C, with minimal freeze/thawing. A working aliquot may be refrigerated at 4°C for a few weeks and still remain viable.



**Western Blotting**

**Image 1.** ABIN571082 (0.01µg/ml) staining of Mouse (A) and Rat (B) kidney lysates, and Mouse (C) and Rat (D) Liver lysates (35µg protein in RIPA buffer). Primary incubation was 1 hour. Detected by chemiluminescence.



**Western Blotting**

**Image 2.** ABIN571082 (0.01µg/ml) staining of Human Liver lysate (35µg protein in RIPA buffer). Primary incubation was 1 hour. Detected by chemiluminescence.