

Datasheet for ABIN571085
anti-CARD17 antibody (C-Term)[Go to Product page](#)

1 Image

Overview

Quantity:	100 µg
Target:	CARD17
Binding Specificity:	C-Term
Reactivity:	Human
Host:	Goat
Clonality:	Polyclonal
Conjugate:	This CARD17 antibody is un-conjugated
Application:	ELISA, Western Blotting (WB)

Product Details

Purpose:	INCA / CARD17
Immunogen:	Peptide with sequence C-NHLTTQDSQIVLPS, from the C Terminus of the protein sequence according to NP_001007233.1.
Sequence:	NHLTTQDSQI VLPS
Isotype:	IgG
Cross-Reactivity:	Human
Purification:	Purified from goat serum by ammonium sulphate precipitation followed by antigen affinity chromatography using the immunizing peptide.
Grade:	Verified

Target Details

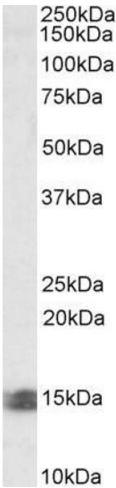
Target:	CARD17
Alternative Name:	INCA (CARD17 Products)
Background:	INCA, CARD17, caspase recruitment domain family, member 17, Inhibitory CARD, caspase recruitment domain-containing protein 17, caspase-1 inhibitor INCA, inhibitory caspase recruitment domain (CARD) protein, inhibitory caspase recruitment domain protein
Gene ID:	440068
NCBI Accession:	NP_001007233

Application Details

Application Notes:	Western Blot: Approx 15 kDa double band observed in Human Kidney and Lung lysates (calculated MW of 11.9 kDa according to NP_001007233.1). Recommended concentration: 0.5-1.5 µg/mL. Peptide ELISA: antibody detection limit dilution 1:8000.
Restrictions:	For Research Use only

Handling

Format:	Liquid
Concentration:	0.5 mg/mL
Buffer:	Supplied at 0.5 mg/mL in Tris saline, 0.02 % sodium azide, pH 7.3 with 0.5 % bovine serum albumin.
Preservative:	Sodium azide
Precaution of Use:	This product contains Sodium azide: a POISONOUS AND HAZARDOUS SUBSTANCE which should be handled by trained staff only.
Handling Advice:	Minimize freezing and thawing.
Storage:	-20 °C
Storage Comment:	Aliquot and store at -20°C, with minimal freeze/thawing. A working aliquot may be refrigerated at 4°C for a few weeks and still remain viable.



Western Blotting

Image 1. ABIN571085 (0.5µg/ml) staining of Human Kidney lysate (35µg protein in RIPA buffer). Primary incubation was 1 hour. Detected by chemiluminescence.