

Datasheet for ABIN5710858

cfaE Protein (AA 1-360, full length) (His-SUMO Tag)



[Go to Product page](#)

1 Image

Overview

Quantity:	100 µg
Target:	cfaE (CFAE)
Protein Characteristics:	full length, AA 1-360
Origin:	E. coli
Source:	Escherichia coli (E. coli)
Protein Type:	Recombinant
Purification tag / Conjugate:	This cfaE protein is labelled with His-SUMO Tag.
Application:	SDS-PAGE (SDS)

Product Details

Sequence:	MNKILFIFTL FFSSGFFTF A VSADKNPGSE NMTNTIGPHD RGGSSPIYNI LNSYLTAYNG SHHLYDRMSF LCLSSQNTLN GACPSSDAPG TATIDGETNI TLQFTEKRSL IKRELQIKGY KQFLFKNANC PSKLALNSSH FQCNRQASG ATLSLYIPAG ELNKL PFGGV WNAVLKLNVK RRYDTTYGTY TINITVNLTD KGNIQIWL PQ FKSARVDLN LRPTGGGT YI GRNSVDMCFY DGYSTNSSSL EIRFQDDNSK SDGKFYLLKI NDDSKELVYT LLLLLAGKNL TPTNGQALNI NTASLETNWN RITAVTMPEI SVPVLCWPGR QLDAKVKNP EAGQYMGNIK ITFTPSSQTL
Purification:	SDS-PAGE
Purity:	> 90 %

Target Details

Target:	cfaE (CFAE)
---------	-------------

Target Details

Alternative Name: CFAE ([CFAE Products](#))

Molecular Weight: 55.88 kDa

UniProt: [P25734](#)

Application Details

Application Notes: Optimal working dilution should be determined by the investigator.

Restrictions: For Research Use only

Handling

Format: Liquid

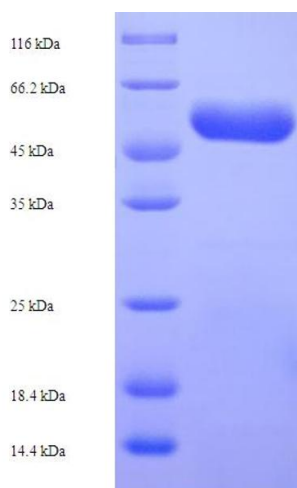
Concentration: 0.1-2 mg/mL

Buffer: 20 mM Tris-HCl based buffer, pH 8.0

Storage: -80 °C, 4 °C, -20 °C

Storage Comment: Store at -20°C, for extended storage, conserve at -20°C or -80°C. Repeated freezing and thawing is not recommended. Store working aliquots at 4°C for up to one week.

Images



SDS-PAGE

Image 1.