

Datasheet for ABIN571087  
**anti-CCAR1 antibody (Internal Region)**[Go to Product page](#)

## 1 Image

## Overview

Quantity:	100 µg
Target:	CCAR1
Binding Specificity:	Internal Region
Reactivity:	Mouse, Rat
Host:	Goat
Clonality:	Polyclonal
Conjugate:	This CCAR1 antibody is un-conjugated
Application:	Western Blotting (WB), ELISA

## Product Details

Purpose:	CCAR1
Immunogen:	Peptide with sequence RYCKERPSKDKE, from the internal region (near C-Terminus) of the protein sequence according to NP_060707.2.
Sequence:	RYCKERPSKD KE
Isotype:	IgG
Cross-Reactivity:	Cow, Dog, Human, Pig, Rat
Purification:	Purified from goat serum by ammonium sulphate precipitation followed by antigen affinity chromatography using the immunizing peptide.
Grade:	Verified

## Target Details

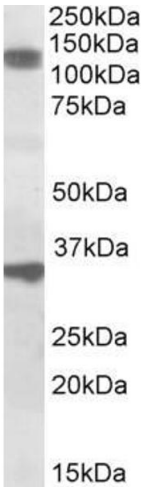
Target:	CCAR1
Alternative Name:	CCAR1 ( <a href="#">CCAR1 Products</a> )
Background:	CCAR1, cell division cycle and apoptosis regulator 1, CARP-1, CARP1, MGC44628, RP11-437A18.1, OTTHUMP00000019709, cell-cycle and apoptosis regulatory protein 1
Gene ID:	55749, 361849
NCBI Accession:	<a href="#">NP_060707</a>

## Application Details

Application Notes:	Western Blot: Approx 120 kDa band observed in Mouse and Rat Skeletal Muscle lysates (calculated MW of 132 kDa according to Mouse NP_080477.1 and Rat NP_001102005.1). Recommended concentration: 1-3 µg/mL. An additional band of unknown identity was also consi Peptide ELISA: antibody detection limit dilution 1:16000.
Restrictions:	For Research Use only

## Handling

Format:	Liquid
Concentration:	0.5 mg/mL
Buffer:	Supplied at 0.5 mg/mL in Tris saline, 0.02 % sodium azide, pH 7.3 with 0.5 % bovine serum albumin.
Preservative:	Sodium azide
Precaution of Use:	This product contains Sodium azide: a POISONOUS AND HAZARDOUS SUBSTANCE which should be handled by trained staff only.
Handling Advice:	Minimize freezing and thawing.
Storage:	-20 °C
Storage Comment:	Aliquot and store at -20°C, with minimal freeze/thawing. A working aliquot may be refrigerated at 4°C for a few weeks and still remain viable.



**Western Blotting**

**Image 1.** ABIN571087 (1µg/ml) staining of Rat Skeletal Muscle lysate (35µg protein in RIPA buffer). Primary incubation was 1 hour. Detected by chemiluminescence.