

Datasheet for ABIN5710886
RAN Protein (AA 2-219) (His-SUMO Tag)



[Go to Product page](#)

1 Image

Overview

Quantity:	100 µg
Target:	RAN
Protein Characteristics:	AA 2-219
Origin:	Saccharomyces cerevisiae
Source:	Escherichia coli (E. coli)
Protein Type:	Recombinant
Purification tag / Conjugate:	This RAN protein is labelled with His-SUMO Tag.
Application:	SDS-PAGE (SDS)

Product Details

Sequence:	SAPAANGEVP TFKLVLVGDG GTGKTTFVKR HLTGEFEKKY IATIGVEVHP LSFYTNFGEI KFDVWDTAGQ EKFGGLRDGY YINAQCAIIM FDVTSRITYK NVPNWHRDLV RVCENIPIVL CGNKVDVKER KVKAKTITFH RKKNLQYYDI SAKSNYNFEK PFLWLARKLA GNPQLEFVAS PALAPPEVQV DEQLMQYQQ EMEQATALPL PDEDDADL
Purification:	SDS-PAGE
Purity:	> 90 %

Target Details

Target:	RAN
Alternative Name:	GSP1 (RAN Products)
Background:	GTP-binding protein involved in nucleocytoplasmic transport. Required for the import of protein

Target Details

into the nucleus and also for RNA export. Essential for cell viability. By analogy with Ras, Ran may be activated when GTP is exchanged for bound GDP by RCC1 and inactivated when GTP is hydrolyzed by Ran upon activation by RanGAP1.

Molecular Weight: 40.66 kDa

UniProt: [P32835](#)

Pathways: [Regulatory RNA Pathways](#), [Intracellular Steroid Hormone Receptor Signaling Pathway](#), [Protein targeting to Nucleus](#)

Application Details

Application Notes: Optimal working dilution should be determined by the investigator.

Restrictions: For Research Use only

Handling

Format: Liquid

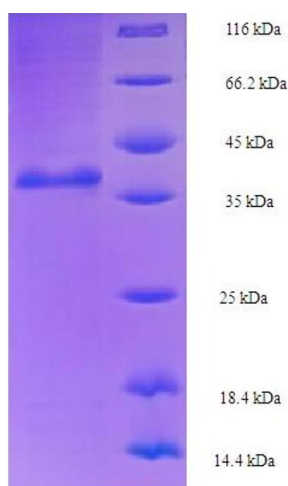
Concentration: 0.1-2 mg/mL

Buffer: 20 mM Tris-HCl based buffer, pH 8.0

Storage: -80 °C, 4 °C, -20 °C

Storage Comment: Store at -20°C, for extended storage, conserve at -20°C or -80°C. Repeated freezing and thawing is not recommended. Store working aliquots at 4°C for up to one week.

Images



SDS-PAGE

Image 1.