

Datasheet for ABIN571091  
**anti-CSMD1 antibody (Internal Region)**[Go to Product page](#)

## 1 Image

## Overview

|                      |                                      |
|----------------------|--------------------------------------|
| Quantity:            | 100 µg                               |
| Target:              | CSMD1                                |
| Binding Specificity: | Internal Region                      |
| Reactivity:          | Human                                |
| Host:                | Goat                                 |
| Clonality:           | Polyclonal                           |
| Conjugate:           | This CSMD1 antibody is un-conjugated |
| Application:         | ELISA, Western Blotting (WB)         |

## Product Details

|                   |   |
|-------------------|---|
| Purpose:          | CSMD1   |
| Immunogen:        | Peptide with sequence C-KGVREVNETVTKTP, from the internal region of the protein sequence according to NP_150094.4.                    |
| Sequence:         | KGVREVNETV TKTP   |
| Isotype:          | IgG   |
| Cross-Reactivity: | Cow, Human, Mouse, Rat  |
| Purification:     | Purified from goat serum by ammonium sulphate precipitation followed by antigen affinity chromatography using the immunizing peptide. |
| Grade:            | Verified  |

## Target Details

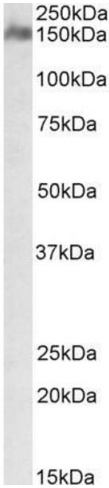
|                   |   |
|-------------------|---|
| Target:           | CSMD1   |
| Alternative Name: | CSMD1 ( <a href="#">CSMD1 Products</a> )          |
| Background:       | CSMD1, CUB and Sushi multiple domains 1, KIAA1890 |
| Gene ID:          | 64478, 94109, 364634                              |
| NCBI Accession:   | <a href="#">NP_150094</a>                         |

## Application Details

|                    |  |
|--------------------|--|
| Application Notes: | Western Blot: Approx 150 kDa band observed in Human Brain (Cerebellum) lysates (calculated MW of 389 kDa according to NP_150094.4). The observed molecular weight corresponds to earlier findings in literature with different antibodies (Kraus et al, J Immuno<br>Peptide ELISA: antibody detection limit dilution 1:128000. |
| Restrictions:      | For Research Use only  |

## Handling

|                    |  |
|--------------------|--|
| Format:            | Liquid   |
| Concentration:     | 0.5 mg/mL  |
| Buffer:            | Supplied at 0.5 mg/mL in Tris saline, 0.02 % sodium azide, pH 7.3 with 0.5 % bovine serum albumin.   |
| Preservative:      | Sodium azide   |
| Precaution of Use: | This product contains Sodium azide: a POISONOUS AND HAZARDOUS SUBSTANCE which should be handled by trained staff only.                         |
| Handling Advice:   | Minimize freezing and thawing.   |
| Storage:           | -20 °C   |
| Storage Comment:   | Aliquot and store at -20°C, with minimal freeze/thawing. A working aliquot may be refrigerated at 4°C for a few weeks and still remain viable. |



Western Blotting

**Image 1.** ABIN571091 (1µg/ml) staining of Human Cerebellum lysate (35µg protein in RIPA buffer). Primary incubation was 1 hour. Detected by chemiluminescence.