

Datasheet for ABIN571094

anti-NDUFS6 antibody (Internal Region)**3** Images[Go to Product page](#)

Overview

| | |
|----------------------|--|
| Quantity: | 100 µg |
| Target: | NDUFS6 |
| Binding Specificity: | Internal Region |
| Reactivity: | Human, Mouse, Rat |
| Host: | Goat |
| Clonality: | Polyclonal |
| Conjugate: | This NDUFS6 antibody is un-conjugated |
| Application: | Western Blotting (WB), ELISA, Immunohistochemistry (IHC) |

Product Details

| | |
|-------------------|---|
| Purpose: | NDUFS6 |
| Immunogen: | C-RIRFVGRQKEVNEN |
| Sequence: | RIRFVGRQKE VNEN |
| Isotype: | IgG |
| Cross-Reactivity: | Cow, Dog, Human, Mouse, Rat |
| Purification: | Purified from goat serum by ammonium sulphate precipitation followed by antigen affinity chromatography using the immunizing peptide. |
| Grade: | Verified |

Target Details

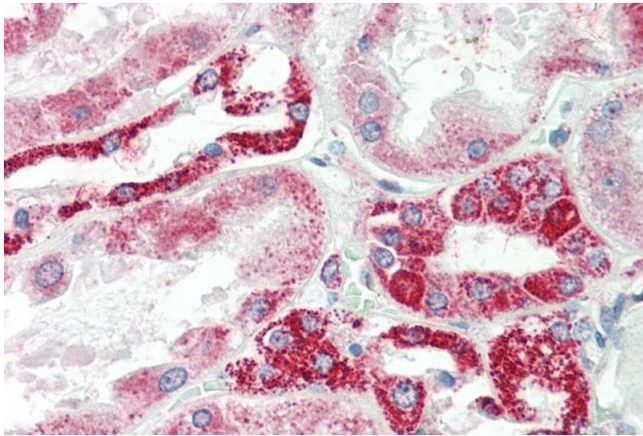
| | |
|-------------------|--|
| Target: | NDUFS6 |
| Alternative Name: | NDUFS6 (NDUFS6 Products) |
| Background: | NDUFS6, NADH dehydrogenase (ubiquinone) Fe-S protein 6, 13 kDa (NADH-coenzyme Q reductase) |
| Gene ID: | 4726, 407785, 29478 |
| NCBI Accession: | NP_004544 |

Application Details

| | |
|--------------------|--|
| Application Notes: | <p>Immunohistochemistry: Paraffin embedded Human Kidney. Recommended concentration: 5 µg/mL.</p> <p>Western Blot: Approx 15 kDa band observed in Human Heart lysates and 14 kDa in Mouse and Rat Heart lysates (calculated MW of 13.7 kDa according to NP_004544.1). Recommended concentration: 0.01-0.03 µg/mL. Primary incubation was 1 hour.</p> <p>Peptide ELISA: antibody detection limit dilution 1:16000.</p> |
| Comment: | Additional validation: This antibody has been successfully used in the following paper: Sikorski et al. (2018) PMID: 30377371. |
| Restrictions: | For Research Use only |

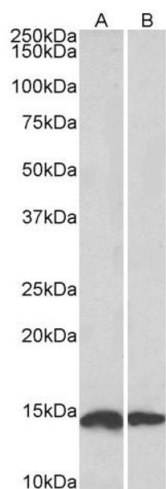
Handling

| | |
|--------------------|--|
| Format: | Liquid |
| Concentration: | 0.5 mg/mL |
| Buffer: | Supplied at 0.5 mg/mL in Tris saline, 0.02 % sodium azide, pH 7.3 with 0.5 % bovine serum albumin. |
| Preservative: | Sodium azide |
| Precaution of Use: | This product contains Sodium azide: a POISONOUS AND HAZARDOUS SUBSTANCE which should be handled by trained staff only. |
| Handling Advice: | Minimize freezing and thawing. |
| Storage: | -20 °C |
| Storage Comment: | Aliquot and store at -20°C, with minimal freeze/thawing. A working aliquot may be refrigerated at 4°C for a few weeks and still remain viable. |



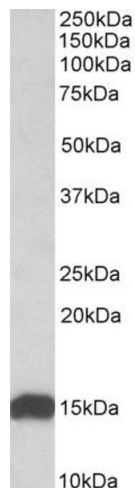
Immunohistochemistry

Image 1. ABIN571094 (5µg/ml) staining of paraffin embedded Human Kidney. Steamed antigen retrieval with citrate buffer pH 6, AP-staining.



Western Blotting

Image 2. ABIN571094 (0.1µg/ml) staining of Mouse (A) and Rat (B) Heart lysates (35µg protein in RIPA buffer). Detected by chemiluminescence.



Western Blotting

Image 3. ABIN571094 (0.01µg/ml) staining of Human Heart lysate (35µg protein in RIPA buffer). Detected by chemiluminescence.