

Datasheet for ABIN5710948

MT1 Protein (AA 1-60, full length) (His-SUMO Tag)



[Go to Product page](#)

1 Image

Overview

Quantity:	100 µg
Target:	MT1
Protein Characteristics:	full length, AA 1-60
Origin:	Zebrafish (Danio rerio)
Source:	Escherichia coli (E. coli)
Protein Type:	Recombinant
Purification tag / Conjugate:	This MT1 protein is labelled with His-SUMO Tag.
Application:	SDS-PAGE (SDS)

Product Details

Sequence:	MDPCECAKTG ACNCGATCKC TNCQCTTCKK SCCSCCPSGC SKCASGCVCK GNSCGTSCCQ
Purification:	SDS-PAGE
Purity:	> 90 %

Target Details

Target:	MT1
Alternative Name:	MT1 (MT1 Products)
Background:	Metallothioneins have a high content of cysteine residues that bind various heavy metals.
Molecular Weight:	21.96 kDa
UniProt:	P52722

Target Details

Pathways: [Transition Metal Ion Homeostasis](#)

Application Details

Application Notes: Optimal working dilution should be determined by the investigator.

Restrictions: For Research Use only

Handling

Format: Liquid

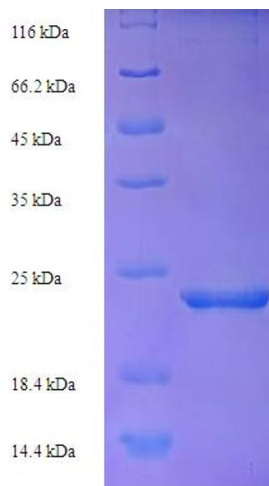
Concentration: 0.1-2 mg/mL

Buffer: 20 mM Tris-HCl based buffer, pH 8.0

Storage: -80 °C, 4 °C, -20 °C

Storage Comment: Store at -20°C, for extended storage, conserve at -20°C or -80°C. Repeated freezing and thawing is not recommended. Store working aliquots at 4°C for up to one week.

Images



SDS-PAGE

Image 1.