

Datasheet for ABIN571097  
**anti-TIPRL antibody (C-Term)**[Go to Product page](#)

## 2 Images

## Overview

Quantity:	100 µg
Target:	TIPRL
Binding Specificity:	C-Term
Reactivity:	Human
Host:	Goat
Clonality:	Polyclonal
Conjugate:	This TIPRL antibody is un-conjugated
Application:	ELISA, Western Blotting (WB), Immunohistochemistry (IHC)

## Product Details

Purpose:	TIPRL
Immunogen:	C-RIDPNPADSQKSTQ
Sequence:	RIDPNPADSQ KSTQ
Isotype:	IgG
Specificity:	This antibody is expected to recognize isoform 1 (NP_690866.1).
Cross-Reactivity:	Cow, Dog, Human, Mouse, Rat
Purification:	Purified from goat serum by ammonium sulphate precipitation followed by antigen affinity chromatography using the immunizing peptide.
Grade:	Verified

## Target Details

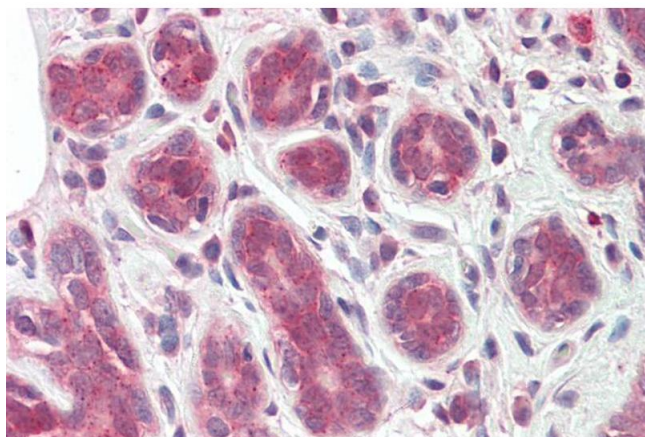
Target:	TIPRL
Alternative Name:	TIPRL ( <a href="#">TIPRL Products</a> )
Background:	TIPRL, TIP41, TOR signaling pathway regulator-like (S. cerevisiae), MGC3794, TIP, TIP41, dJ69E11.3, CG9578-like, OTTHUMP00000032581, OTTHUMP00000032582, TIP41, TOR signalling pathway regulator-like, putative MAPK activating protein, yeast YPR037W and worm
Gene ID:	261726, 226591, 360869
NCBI Accession:	<a href="#">NP_690866</a>

## Application Details

Application Notes:	Immunohistochemistry: Paraffin embedded Human Breast. Recommended concentration: 3.75 µg/mL.  Western Blot: Approx 30 kDa band observed in lysates of cell line K562 (calculated MW of 31.4 kDa according to NP_690866.1). Recommended concentration: 1-3 µg/mL. Primary incubation was 1 hour.  Peptide ELISA: antibody detection limit dilution 1:16000.
Restrictions:	For Research Use only

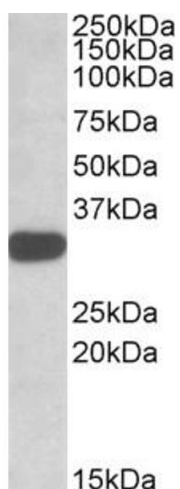
## Handling

Format:	Liquid
Concentration:	0.5 mg/mL
Buffer:	Supplied at 0.5 mg/mL in Tris saline, 0.02 % sodium azide, pH 7.3 with 0.5 % bovine serum albumin.
Preservative:	Sodium azide
Precaution of Use:	This product contains Sodium azide: a POISONOUS AND HAZARDOUS SUBSTANCE which should be handled by trained staff only.
Handling Advice:	Minimize freezing and thawing.
Storage:	-20 °C
Storage Comment:	Aliquot and store at -20°C, with minimal freeze/thawing. A working aliquot may be refrigerated at 4°C for a few weeks and still remain viable.



#### Immunohistochemistry

**Image 1.** ABIN571097 (3.75µg/ml) staining of paraffin embedded Human Breast. Steamed antigen retrieval with citrate buffer pH 6, AP-staining.



#### Western Blotting

**Image 2.** ABIN571097 (1µg/ml) staining of K562 lysate (35µg protein in RIPA buffer). Detected by chemiluminescence.