

Datasheet for ABIN571098
anti-TGFBI antibody (Internal Region)

4 Images

[Go to Product page](#)

Overview

Quantity:	100 µg
Target:	TGFBI
Binding Specificity:	Internal Region
Reactivity:	Human, Rat
Host:	Goat
Clonality:	Polyclonal
Conjugate:	This TGFBI antibody is un-conjugated
Application:	Western Blotting (WB), Immunohistochemistry (IHC), ELISA, Immunofluorescence (IF)

Product Details

Purpose:	TGFBI
Immunogen:	Peptide with sequence C-QLYTD RTEKLRPE, from the internal region of the protein sequence according to NP_000349.1.
Sequence:	QLYTD RTEKLRPE
Isotype:	IgG
Cross-Reactivity:	Dog, Human, Mouse, Rat
Purification:	Purified from goat serum by ammonium sulphate precipitation followed by antigen affinity chromatography using the immunizing peptide.
Grade:	Verified

Target Details

Target:	TGFBI
Alternative Name:	TGFBI (TGFBI Products)
Background:	TGFBI, transforming growth factor, beta-induced, 68 kDa, BIGH3, CDB1, CDG2, CDGG1, CSD, CSD1, CSD2, CSD3, EBMD, LCD1, RGD-containing collagen-associated protein, kerato-epithelin
Molecular Weight:	74.7kDa
Gene ID:	7045, 21810, 24511
NCBI Accession:	NP_000349

Application Details

Application Notes:	<p>Immunohistochemistry: In paraffin embedded Kidney shows staining of intercalated cells of a collecting tubule. Recommended concentration: 4-6 µg/mL. This antibody has been successfully used in IHC on Rat, PMID: 26407577.</p> <p>Western Blot: Approx 70 kDa band observed in Human and Rat Kidney lysates, and approx 75 kDa in Human Prostate and Human Colorectal cancer lysates (calculated MW of 74.7 kDa according to Human NP_000349.1 and 74.8 kDa according to Rat NP_446254.1). Recommend Peptide ELISA: antibody detection limit dilution 1:32000.</p>
Comment:	Immunofluorescence: Strong expression of the protein seen in the golgi and plasma membrane of HeLa cells. Recommended concentration: 10µg/ml.
Restrictions:	For Research Use only

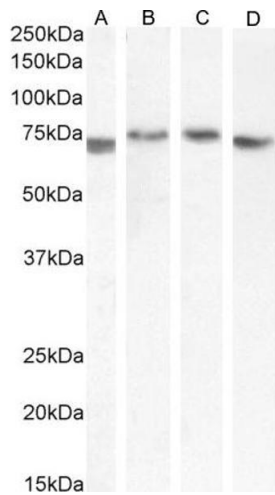
Handling

Format:	Liquid
Concentration:	0.5 mg/mL
Buffer:	Supplied at 0.5 mg/mL in Tris saline, 0.02 % sodium azide, pH 7.3 with 0.5 % bovine serum albumin.
Preservative:	Sodium azide
Precaution of Use:	This product contains Sodium azide: a POISONOUS AND HAZARDOUS SUBSTANCE which should be handled by trained staff only.
Handling Advice:	Minimize freezing and thawing.
Storage:	-20 °C

Handling

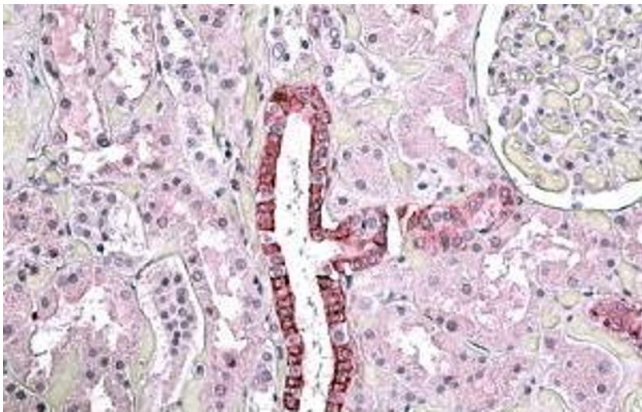
Storage Comment: Aliquot and store at -20°C, with minimal freeze/thawing. A working aliquot may be refrigerated at 4°C for a few weeks and still remain viable.

Images



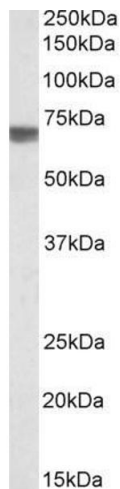
Western Blotting

Image 1. (ABIN571098) (0.3 µg/mL) staining of Human Kidney (A), Colorectal cancer (B), (0.1 µg/mL) Human Prostate (C) and Rat Kidney (D) lysate (35 µg protein in RIPA buffer). Detected by chemiluminescence.



Immunohistochemistry

Image 2. ABIN571098 (3.8µg/ml) staining of paraffin embedded Human Kidney. Steamed antigen retrieval with citrate buffer pH 6, AP-staining.



Western Blotting

Image 3. ABIN571098 (0.3µg/ml) staining of Human Kidney lysate (35µg protein in RIPA buffer). Primary incubation was 1 hour. Detected by chemiluminescence.

Please check the [product details page](#) for more images. Overall 4 images are available for ABIN571098.