

Datasheet for ABIN571099
anti-Tppp antibody (Internal Region)

6 Images

[Go to Product page](#)

Overview

| | |
|----------------------|----------------------------------------------------------|
| Quantity: | 100 µg |
| Target: | Tppp |
| Binding Specificity: | Internal Region |
| Reactivity: | Human, Mouse, Rat |
| Host: | Goat |
| Clonality: | Polyclonal |
| Conjugate: | This Tppp antibody is un-conjugated |
| Application: | Western Blotting (WB), ELISA, Immunohistochemistry (IHC) |

Product Details

| | |
|-------------------|---------------------------------------------------------------------------------------------------------------------------------------|
| Purpose: | TPPP/p25 |
| Immunogen: | C-DPSKDRAAKRLSLES |
| Sequence: | DPSKDRAAKR LSLES |
| Isotype: | IgG |
| Cross-Reactivity: | Human |
| Purification: | Purified from goat serum by ammonium sulphate precipitation followed by antigen affinity chromatography using the immunizing peptide. |
| Grade: | Verified |

Target Details

| | |
|-------------------|------------------------------------------------------------------------------------------------------------------------------------------------------------------------------------------------------------------|
| Target: | Tppp |
| Alternative Name: | TPPP (Tppp Products) |
| Background: | TPPP, tubulin polymerization promoting protein, TPPP/p25, TPPP1, p24, p25, p25alpha, brain specific protein p25 alpha, glycogen synthase kinase 3 (GSK3) inhibitor p24, tubulin polymerization-promoting protein |
| Gene ID: | 11076, 72948, 361466 |
| NCBI Accession: | NP_008961 |

Application Details

| | |
|--------------------|----------------------------------------------------------------------------------------------------------------------------------------------------------------------------------------------------------------------------------------------------------------------------------------------------------------------------------------------------------------------------------------------------------------------------------------------------------------------------------------------------------------------------------------------------------------------------------------------|
| Application Notes: | <p>Immunohistochemistry: In paraffin embedded Human Cerebellum shows strong staining of axonal bundles through the granular layer. Recommended concentration: 1-2 µg/mL. Paraffin embedded Human Cortex. Recommended concentration: 3.75 µg/mL.</p> <p>Western Blot: Approx 26 kDa band observed in Human Brain (Cerebellum), Mouse and Rat Brain lysates (calculated MW of 23.7 kDa according to NP_008961.1). The observed molecular weight corresponds to earlier findings in literature with different antibodies (</p> <p>Peptide ELISA: antibody detection limit dilution 1:32000.</p> |
| Comment: | Additional validation: This antibody has been successfully used in the following paper: Sikorski et al. (2018) PMID: 30377371. |
| Restrictions: | For Research Use only |

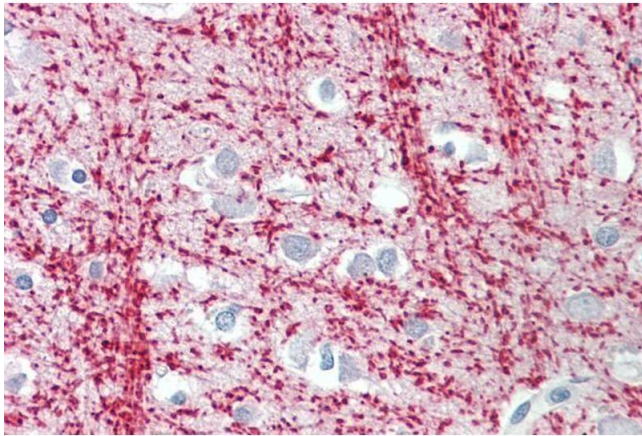
Handling

| | |
|--------------------|------------------------------------------------------------------------------------------------------------------------|
| Format: | Liquid |
| Concentration: | 0.5 mg/mL |
| Buffer: | Supplied at 0.5 mg/mL in Tris saline, 0.02 % sodium azide, pH 7.3 with 0.5 % bovine serum albumin. |
| Preservative: | Sodium azide |
| Precaution of Use: | This product contains Sodium azide: a POISONOUS AND HAZARDOUS SUBSTANCE which should be handled by trained staff only. |
| Handling Advice: | Minimize freezing and thawing. |
| Storage: | -20 °C |

Handling

Storage Comment: Aliquot and store at -20°C, with minimal freeze/thawing. A working aliquot may be refrigerated at 4°C for a few weeks and still remain viable.

Images



Immunohistochemistry

Image 1. ABIN571099 (3.75µg/ml) staining of paraffin embedded Human Cortex. Steamed antigen retrieval with citrate buffer pH 6, AP-staining.

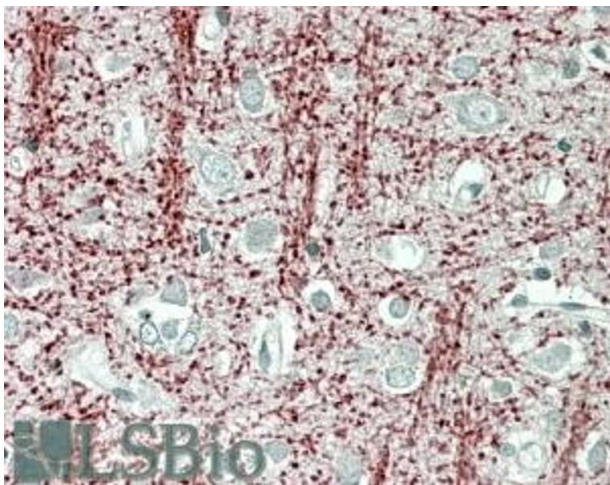


Image 2. ABIN571099 (3.8 µg/mL) staining of paraffin embedded Human Cerebral Cortex. Steamed antigen retrieval with citrate buffer pH 6, AP-staining.

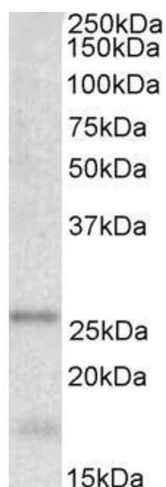


Image 3. ABIN571099 (0.001 µg/mL) staining of Human Cerebellum lysate (35 µg protein in RIPA buffer). Primary incubation was 1 hour. Detected by chemiluminescence.

Please check the [product details page](#) for more images. Overall 6 images are available for ABIN571099.