

Datasheet for ABIN571100
anti-PDE1A antibody (C-Term)[Go to Product page](#)

2 Images

Overview

Quantity:	100 µg
Target:	PDE1A
Binding Specificity:	C-Term
Reactivity:	Human
Host:	Goat
Clonality:	Polyclonal
Conjugate:	This PDE1A antibody is un-conjugated
Application:	Western Blotting (WB), ELISA, Immunohistochemistry (IHC)

Product Details

Purpose:	PDE1A
Immunogen:	Peptide with sequence C-DLHKNSEDLVNAE, from the C Terminus of the protein sequence according to NP_005010.2.
Sequence:	DLHKNSEDLV NAE
Isotype:	IgG
Specificity:	This antibody is expected to recognize isoform 1 (NP_005010.2) only.
Cross-Reactivity:	Cow, Human, Mouse, Rat
Purification:	Purified from goat serum by ammonium sulphate precipitation followed by antigen affinity chromatography using the immunizing peptide.
Grade:	Verified

Target Details

Target:	PDE1A
Alternative Name:	PDE1A (PDE1A Products)
Background:	PDE1A, phosphodiesterase 1A, calmodulin-dependent, HCAM1, HSPDE1A, MGC26303, 3',5' cyclic nucleotide phosphodiesterase, calcium/calmodulin-stimulated cyclic nucleotide phosphodiesterase, calmodulin-dependent phosphodiesterase, phosphodiesterase-1A
Gene ID:	5136, 18573, 81529
NCBI Accession:	NP_005010
Pathways:	Neurotrophin Signaling Pathway , cAMP Metabolic Process , G-protein mediated Events , Interaction of EGFR with phospholipase C-gamma

Application Details

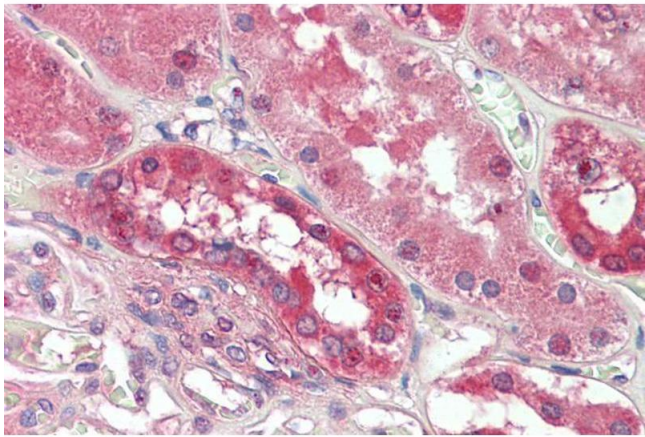
Application Notes:	Immunohistochemistry: Paraffin embedded Human Kidney. Recommended concentration: 3.75 µg/mL. Western Blot: Approx 55 kDa band observed in Human Brain (Cerebellum) lysates (calculated MW of 62.3 kDa according to NP_005010.2). Recommended concentration: 1-3 µg/mL. Primary incubation was 1 hour. Peptide ELISA: antibody detection limit dilution 1:64000.
Restrictions:	For Research Use only

Handling

Format:	Liquid
Concentration:	0.5 mg/mL
Buffer:	Supplied at 0.5 mg/mL in Tris saline, 0.02 % sodium azide, pH 7.3 with 0.5 % bovine serum albumin.
Preservative:	Sodium azide
Precaution of Use:	This product contains Sodium azide: a POISONOUS AND HAZARDOUS SUBSTANCE which should be handled by trained staff only.
Handling Advice:	Minimize freezing and thawing.
Storage:	-20 °C
Storage Comment:	Aliquot and store at -20°C, with minimal freeze/thawing. A working aliquot may be refrigerated

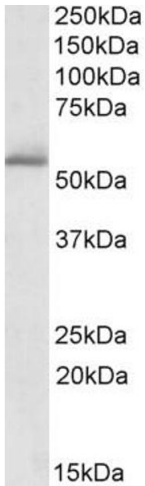
at 4°C for a few weeks and still remain viable.

Images



Immunohistochemistry

Image 1. ABIN571100 (3.75µg/ml) staining of paraffin embedded Human Kidney. Steamed antigen retrieval with citrate buffer pH 6, AP-staining.



Western Blotting

Image 2. ABIN571100 (1µg/ml) staining of Human Cerebellum lysate (35µg protein in RIPA buffer). Detected by chemiluminescence.