

Datasheet for ABIN571105  
**anti-GHITM antibody (Internal Region)**[Go to Product page](#)

2 Images

1 Publication

## Overview

Quantity:	100 µg
Target:	GHITM
Binding Specificity:	Internal Region
Reactivity:	Human
Host:	Goat
Clonality:	Polyclonal
Conjugate:	This GHITM antibody is un-conjugated
Application:	ELISA, Western Blotting (WB)

## Product Details

Purpose:	MICS1 / GHITM
Immunogen:	Peptide with sequence C-PSREYATKTRIGIR, from the internal region of the protein sequence according to NP_055209.2.
Sequence:	PSREYATKTR IGIR
Isotype:	IgG
Cross-Reactivity:	Cow, Dog, Human, Mouse, Pig, Rat
Purification:	Purified from goat serum by ammonium sulphate precipitation followed by antigen affinity chromatography using the immunizing peptide.
Grade:	Verified

## Target Details

Target:	GHITM
Alternative Name:	GHITM ( <a href="#">GHITM Products</a> )
Background:	GHITM, growth hormone inducible transmembrane protein, DERP2, DKFZp566C0746, FLJ26584, HSPC282, MICS1, My021, PTD010, TMBIM5, dermal papilla-derived protein 2, mitochondrial morphology and cristae structure 1, transmembrane BAX inhibitor motif containing
Gene ID:	27069, 66092, 290596
NCBI Accession:	<a href="#">NP_055209</a>
Pathways:	<a href="#">SARS-CoV-2 Protein Interactome</a>

## Application Details

Application Notes:	Western Blot: Approx 35 kDa band observed in lysates of cell line HeLa and of Human Brain (Cerebellum), Duodenum and Heart (calculated MW of 37.2 kDa according to Human NP_055209.2). Recommended concentration: 0.01-0.1 µg/mL. Peptide ELISA: antibody detection limit dilution 1:8000.
Restrictions:	For Research Use only

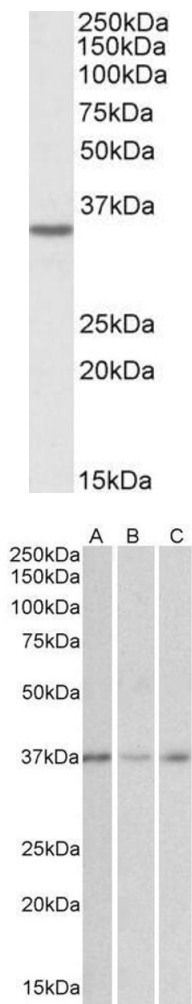
## Handling

Format:	Liquid
Concentration:	0.5 mg/mL
Buffer:	Supplied at 0.5 mg/mL in Tris saline, 0.02 % sodium azide, pH 7.3 with 0.5 % bovine serum albumin.
Preservative:	Sodium azide
Precaution of Use:	This product contains Sodium azide: a POISONOUS AND HAZARDOUS SUBSTANCE which should be handled by trained staff only.
Handling Advice:	Minimize freezing and thawing.
Storage:	-20 °C
Storage Comment:	Aliquot and store at -20°C, with minimal freeze/thawing. A working aliquot may be refrigerated at 4°C for a few weeks and still remain viable.

Publications

Product cited in: Meng, Yamashita, Shiba-Fukushima, Inoshita, Funayama, Sato, Hatta, Natsume, Umitsu, Takagi, Imai, Hattori: "Loss of Parkinson's disease-associated protein CHCHD2 affects mitochondrial crista structure and destabilizes cytochrome c." in: **Nature communications**, Vol. 8, pp. 15500, (2018) ([PubMed](#)).

Images



Western Blotting

**Image 1.** Antibody (0.3µg/ml) staining of HeLa cell lysate (35µg protein in RIPA buffer). Primary incubation was 1 hour. Detected by chemiluminescence.

Western Blotting

**Image 2.** ABIN571105 (0.01µg/ml) staining of Human Cerebellum (A), Duodenum (B) and Heart (C) cell lysates (35µg protein in RIPA buffer). Primary incubation was 1 hour. Detected by chemiluminescence.